

LEA Name : Interboro SD
Address : 900 Washington Ave
Prospect Park , PA 19076

County : Delaware
AUN Number : 125235103
LEA Type : SD

Annual Financial Report Accuracy Certification Statement

For Fiscal Year Ending
6/30/2019


Pennsylvania Department of Education
&
Office of Comptroller Operations

PDE-2056: Intermediate Unit
PDE-2057: School District, AVTS/CTC, Charter School,
and Special Program Jointure

CERTIFICATION: By signing this page I agree that the electronic data submitted is a complete and accurate statement of the financial operations and status of the local education agency for the fiscal year. It has been prepared in accordance with generally accepted accounting principles and established Commonwealth of PA reporting guidelines.



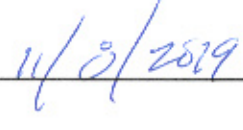
Chief School Administrator Signature



Date



Board Secretary Signature



Date

Martin Heiskell

Contact Person

(610)461-6700 Ext :1124

Contact Person Telephone Number

martin.heiskell@interborosd.org

Contact Person E-mail Address

(610)237-9624

Contact Person Fax Number

Audit Certification
Annual Financial Report:
For Fiscal Year Ending **6/30/2019**
(Pursuant to PA School Code Section 218(b))

LEA Name : Interboro SD
AUN Number : 125235103
County : Delaware

Audit Certification Due: 12/31/2019

This certification is applicable to the Annual Financial Report data submitted through the Consolidated Financial Reporting System on: _____
Date

Auditing Firm:

CERTIFICATION: By signing this page I agree that the financial statements of the school have been properly audited as noted above pursuant to Article XXIV, and in the auditor's professional opinion, the Annual Financial Report (PDE-2057) submitted on the date referenced is materially consistent with the audited financial statements.

Chief School Administrator

Board Secretary

Signature

Date

Signature

Date

Martin Heiskell

Contact Person

martin.heiskell@interborosd.org

Contact Person E-mail Address

(610)461-6700 Ext :1124

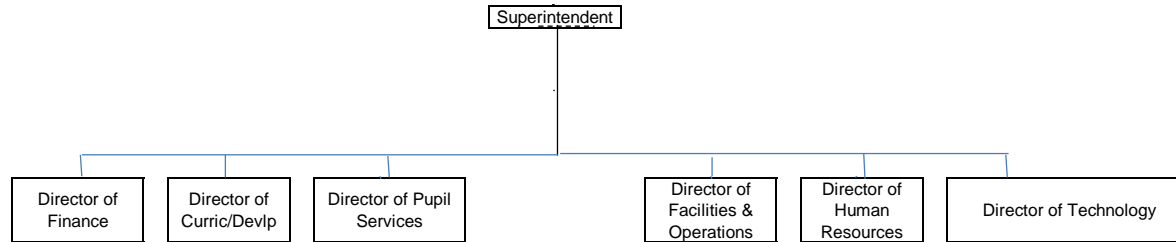
Contact Person Telephone Number

(610)237-9624

Contact Person Fax Number

**Interboro School District
Organization Chart
2018 - 2019**

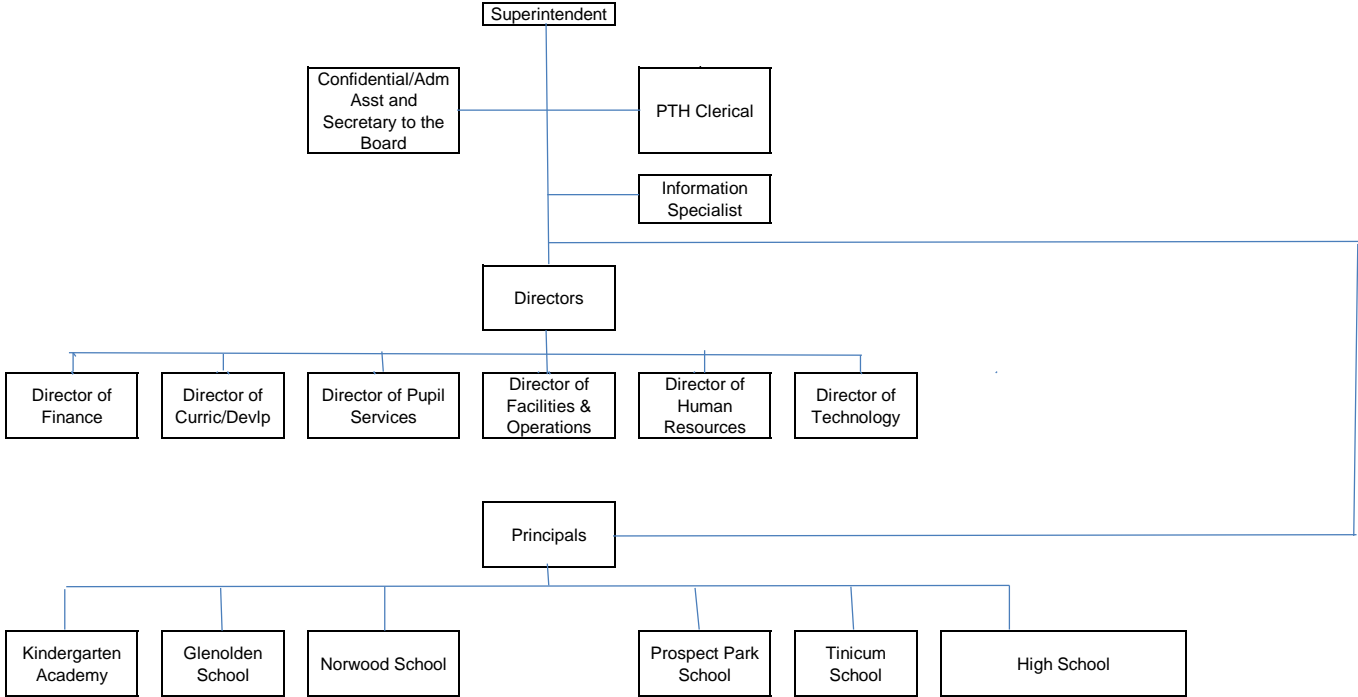
District Level



**Interboro School District
Organization Chart
2018 - 2019**

Department Level

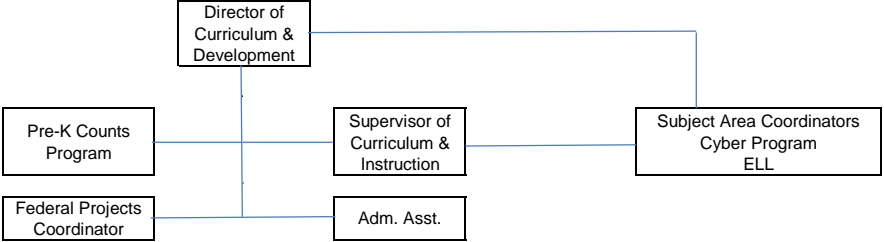
Office of Superintendent



Interboro School District
Organization Chart
2018 - 2019

Department Level

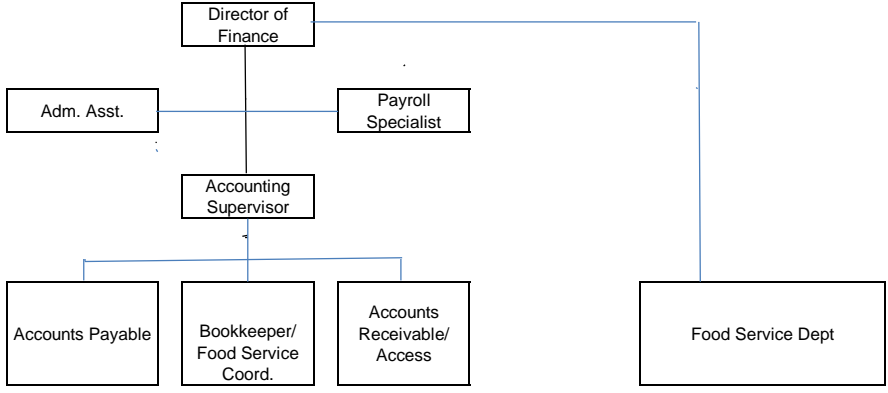
Office of Curriculum and Development



Interboro School District
Organization Chart
2018 - 2019

Department Level

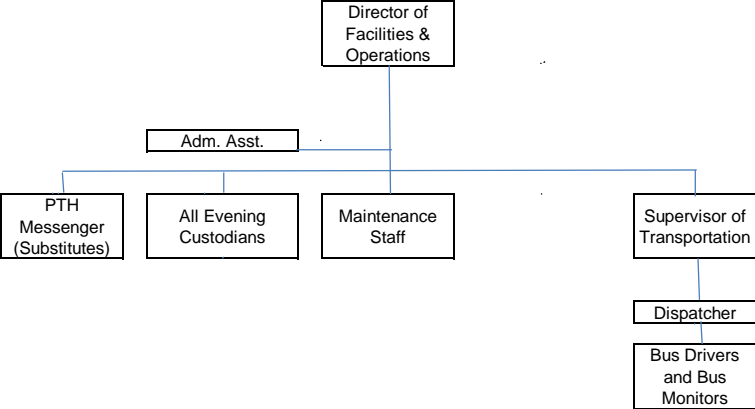
Business Office



Interboro School District
Organization Chart
2018 - 2019

Department Level

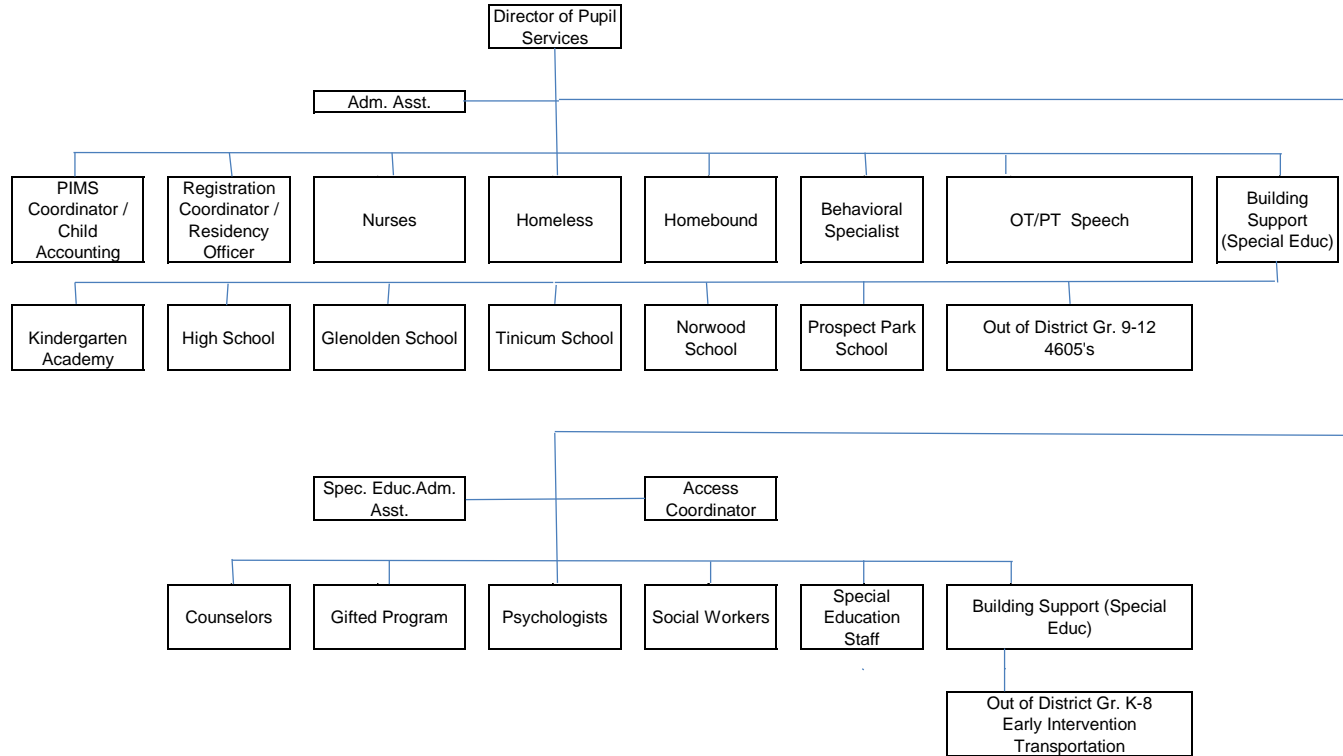
Office of Facilities and Operations



**Interboro School District
Organization Chart
2018 - 2019**

Department Level

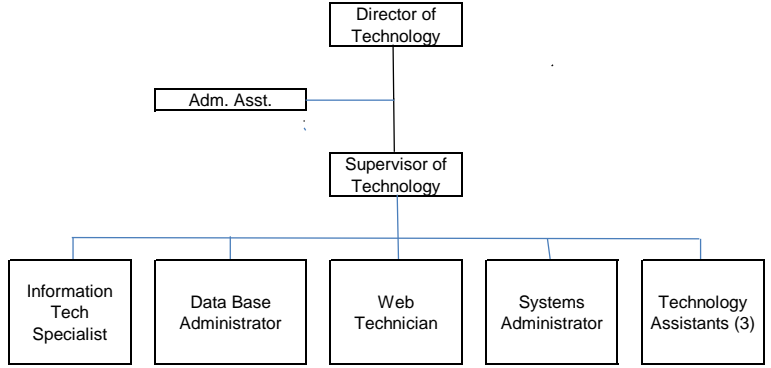
Office of Pupil Services



Interboro School District
Organization Chart
2018 - 2019

Department Level

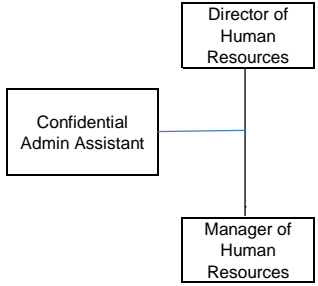
Technology Department



**Interboro School District
Organization Chart
2018 - 2019**

Department Level

Office of Human Resources



<u>Val Number</u>	<u>Description</u>	<u>Justification</u>
30501	Revenue Detail: AFR amount must equal PDE FAI system amount. 7311, AFR Rev Detail: \$372,511.44 7311, PDE FAI System: \$376,742.41	Per the FAI Audit Confirmation of Subsidy Payments for 2018-2019 regarding the Interboro School District the amount for 7311 is \$372,511.44 for Program 737.
50450	SESS - 2350 Legal and Accounting Services: SESS Schedule amounts for Special Education vary from prior year by 40% or more. Correct the data or enter a justification. SESS Schedule 2350: \$97,230.50 Prior Year SESS Schedule 2350: \$56,519.89	The legal fees for special education increased from 2017-2018 were primarily due to three special education due process hearings that took place in 2018-2019.

Amounts Expressed in Whole Dollars	<u>General Fund</u> <u>(10)</u>	<u>Public Purpose Trust</u> <u>(27)</u>	<u>Other Compt Approved</u> <u>(28)</u>	<u>Athletic / Activity</u> <u>(29)</u>	<u>Capital Reserve (690.</u> <u>1850)</u> <u>(31)</u>
Assets And Deferred Outflows Of Resources					
Assets					
0100 Cash and Cash Equivalents	6,935,336				
0110 Investments					
0120 Taxes Receivable	1,620,411				
0130 Due From Other Funds	176,108				
0141 Due From Other Governments	665,647				
0142 State Revenue Receivable	2,193,156				
0143 Federal Revenue Receivable	16,930				
0145 Other Intergovernmental Revenue Receivable					
0146 Due from Primary Government					
0147 Due from Component Unit					
0150 Other Receivables	124,196				
0170 Inventories	3,642				
0180 Prepaid Expenses (Expenditures)	60,991				
0190 Other Current Assets					
Total Assets	\$11,796,417				
0910 Deferred Outflows of Resources					
Total Assets And Deferred Outflows Of Resources	\$11,796,417				

Amounts Expressed in Whole Dollars	<u>Capital Reserve (1431)</u> <u>(32)</u>	<u>Other Capital Projects</u> <u>Fund</u> <u>(39)</u>	<u>Debt Service</u> <u>(40)</u>	<u>Permanent</u> <u>(90)</u>	<u>Total Governmental</u> <u>Funds</u>
Assets And Deferred Outflows Of Resources					
Assets					
0100 Cash and Cash Equivalents	832	36,685			6,972,853
0110 Investments					
0120 Taxes Receivable					1,620,411
0130 Due From Other Funds					176,108
0141 Due From Other Governments					665,647
0142 State Revenue Receivable					2,193,156
0143 Federal Revenue Receivable					16,930
0145 Other Intergovernmental Revenue Receivable					
0146 Due from Primary Government					
0147 Due from Component Unit					
0150 Other Receivables					124,196
0170 Inventories					3,642
0180 Prepaid Expenses (Expenditures)					60,991
0190 Other Current Assets					
Total Assets	\$832	\$36,685			\$11,833,934
0910 Deferred Outflows of Resources					
Total Assets And Deferred Outflows Of Resources	\$832	\$36,685			\$11,833,934

Amounts Expressed in Whole Dollars

	<u>General Fund</u> <u>(10)</u>	<u>Public Purpose Trust</u> <u>(27)</u>	<u>Other Compt Approved</u> <u>(28)</u>	<u>Athletic / Activity</u> <u>(29)</u>	<u>Capital Reserve (690.</u> <u>1850)</u> <u>(31)</u>
Liabilities And Deferred Inflows Of Resources And Fund Balances					
Liabilities					
0400 Due to Other Funds	6,515				
0411 Due to Other Governments					
0412 Due to Primary Government					
0413 Due to Component Unit					
0420 Accounts Payable	708,678				
0430 Contracts Payable					
0440 Current Portion of Long-Term Debt					
0450 Short-Term Payables					
0461 Accrued Salaries and Benefits	5,374,735				
0462 Payroll Deductions and Withholding	1,284,816				
0480 Unearned Revenues	66,927				
0490 Other Current Liabilities	7,919				
Total Liabilities	\$7,449,590				
0950 Deferred Inflows of Resources	1,272,481				
Fund Balances					
0810 Nonspendable Fund Balance	64,633				
0820 Restricted Fund Balance	348,017				
0830 Committed Fund Balance	25,000				
0840 Assigned Fund Balance					
0850 Unassigned Fund Balance	2,636,696				
Total Fund Balances	\$3,074,346				
Total Liabilities, Deferred Inflows Of Resources And Fund Balances	\$11,796,417				

Amounts Expressed in Whole Dollars	<u>Capital Reserve (1431)</u> <u>(32)</u>	<u>Other Capital Projects</u> <u>Fund</u> <u>(39)</u>	<u>Debt Service</u> <u>(40)</u>	<u>Permanent</u> <u>(90)</u>	<u>Total Governmental</u> <u>Funds</u>
Liabilities And Deferred Inflows Of Resources And Fund Balances					
Liabilities					
0400 Due to Other Funds					6,515
0411 Due to Other Governments					
0412 Due to Primary Government					
0413 Due to Component Unit					
0420 Accounts Payable		290			708,968
0430 Contracts Payable					
0440 Current Portion of Long-Term Debt					
0450 Short-Term Payables					
0461 Accrued Salaries and Benefits					5,374,735
0462 Payroll Deductions and Withholding					1,284,816
0480 Unearned Revenues					66,927
0490 Other Current Liabilities					7,919
Total Liabilities		\$290			\$7,449,880
0950 Deferred Inflows of Resources					1,272,481
Fund Balances					
0810 Nonspendable Fund Balance					64,633
0820 Restricted Fund Balance		36,395			384,412
0830 Committed Fund Balance					25,000
0840 Assigned Fund Balance	832				832
0850 Unassigned Fund Balance					2,636,696
Total Fund Balances	\$832	\$36,395			\$3,111,573
Total Liabilities, Deferred Inflows Of Resources And Fund Balances	\$832	\$36,685			\$11,833,934

Amounts Expressed in Whole Dollars	<u>General Fund</u> <u>(10)</u>	<u>Public Purpose Trust</u> <u>(27)</u>	<u>Other Compt Approved</u> <u>(28)</u>	<u>Athletic / Activity</u> <u>(29)</u>	<u>Capital Reserve (690.</u> <u>1850)</u> <u>(31)</u>
Revenues					
6000 Revenue from Local Sources	43,179,369				
7000 Revenue from State Sources	22,478,736				
8000 Revenue from Federal Sources	657,996				
Total Revenues	\$66,316,101				
Expenditures					
1000 Instruction	41,258,598				
2000 Support Services	20,309,187				
3000 Operation of Non-Instructional Services	973,876				
4000 Facilities Acquisition, Construction and Improvement Services	55,496				
5110 Debt Service	4,561,072				
5130 Refund of Prior Year Revenues / Receipts	222				
Total Expenditures	\$67,158,451				
Excess (Deficiency) Of Revenues Over Expenditures	(\$842,350)				
Other Financing Sources (Uses)					
9110 Face Value of Bonds Issued					
9120 Proceeds from Refunding of Bonds					
9130 Bond Premiums					
9200 Proceeds from Extended-Term Financing					
9300 Interfund Transfers - IN					
9400 Sale of or Compensation for Loss of Fixed Assets					
9710 Transfers from Component Units					
9720 Transfers from Primary Governments					
9910 Other Financing Sources Not Listed in the 9000 Series					
9990 Insurance Recoveries					
5120 Debt Service – Refunded Bonds					
5150 Bond Discounts					
5200 Interfund Transfers – Out					
5300 Transfers Out to Component Units/Primary Governments					
Total Other Financing Sources (Uses)					

Amounts Expressed in Whole Dollars	<u>Capital Reserve (1431)</u> <u>(32)</u>	<u>Other Capital Projects</u> <u>Fund</u> <u>(39)</u>	<u>Debt Service</u> <u>(40)</u>	<u>Permanent</u> <u>(90)</u>	<u>Total Governmental</u> <u>Funds</u>
Revenues					
6000 Revenue from Local Sources					43,179,369
7000 Revenue from State Sources					22,478,736
8000 Revenue from Federal Sources					657,996
Total Revenues					\$66,316,101
Expenditures					
1000 Instruction					41,258,598
2000 Support Services					20,309,187
3000 Operation of Non-Instructional Services					973,876
4000 Facilities Acquisition, Construction and Improvement Services		70,604			126,100
5110 Debt Service					4,561,072
5130 Refund of Prior Year Revenues / Receipts					222
Total Expenditures		\$70,604			\$67,229,055
Excess (Deficiency) Of Revenues Over Expenditures		(\$70,604)			(\$912,954)
Other Financing Sources (Uses)					
9110 Face Value of Bonds Issued					
9120 Proceeds from Refunding of Bonds					
9130 Bond Premiums					
9200 Proceeds from Extended-Term Financing					
9300 Interfund Transfers - IN					
9400 Sale of or Compensation for Loss of Fixed Assets					
9710 Transfers from Component Units					
9720 Transfers from Primary Governments					
9910 Other Financing Sources Not Listed in the 9000 Series					
9990 Insurance Recoveries					
5120 Debt Service – Refunded Bonds					
5150 Bond Discounts					
5200 Interfund Transfers – Out					
5300 Transfers Out to Component Units/Primary Governments					
Total Other Financing Sources (Uses)					

Amounts Expressed in Whole Dollars

<u>General Fund</u>	<u>Public Purpose Trust</u>	<u>Other Compt Approved</u>	<u>Athletic / Activity</u>	<u>Capital Reserve</u>
<u>(10)</u>	<u>(27)</u>	<u>(28)</u>	<u>(29)</u>	<u>(690,185)</u>
				<u>(31)</u>

Special And Extraordinary Items
 9920 Special Items – Gains
 9930 Extraordinary Items – Gains
 5520 Special Items – Losses
 5530 Extraordinary Items – Losses

Net Change In Fund Balances	(\$842,350)			
------------------------------------	--------------------	--	--	--

Fund Balance
 0001 Fund Balance - Beginning of Fiscal Year

3,916,696

Fund Balance - End Of Year	\$3,074,346			
-----------------------------------	--------------------	--	--	--

Amounts Expressed in Whole Dollars	<u>Capital Reserve (1431)</u> <u>(32)</u>	<u>Other Capital Projects</u> <u>Fund</u> <u>(39)</u>	<u>Debt Service</u> <u>(40)</u>	<u>Permanent</u> <u>(90)</u>	<u>Total Governmental</u> <u>Funds</u>
Special And Extraordinary Items					
9920 Special Items – Gains					
9930 Extraordinary Items – Gains					
5520 Special Items – Losses					
5530 Extraordinary Items – Losses					
Net Change In Fund Balances		(\$70,604)			(\$912,954)
Fund Balance					
0001 Fund Balance - Beginning of Fiscal Year	832	106,999			4,024,527
Fund Balance - End Of Year	\$832	\$36,395			\$3,111,573

Amounts Expressed in Whole Dollars	<u>Food Service</u> <u>(51)</u>	<u>Child Care</u> <u>Operations</u> <u>(52)</u>	<u>Other Enterprise</u> <u>(58)</u>	<u>TOTAL</u>	<u>Internal Service</u> <u>(60)</u>
Assets And Deferred Outflows Of Resources					
Current Assets					
0100 Cash and Cash Equivalents	32,026			32,026	
0110 Investments					
0130 Due From Other Funds					
0141 Due From Other Governments					
0142 State Revenue Receivable	5,715			5,715	
0143 Federal Revenue Receivable	115,353			115,353	
0146 Due from Primary Government					
0147 Due from Component Unit					
0150 Other Receivables					
0170 Inventories	4,761			4,761	
0180 Prepaid Expenses (Expenditures)					
0190 Other Current Assets					
Total Current Assets	\$157,855			\$157,855	
Noncurrent Assets					
0211 Land					
0212 Site Improvements (Net)					
0220 Buildings and Building Improvements (Net)					
0230 Machinery, Equipment and Furniture (Net)	428,435			428,435	
0250 Construction in Progress					
0260 Long Term Prepayments					
0290 Other Noncurrent Assets					
Total Noncurrent Assets	\$428,435			\$428,435	
0910 Deferred Outflows of Resources					
Total Assets And Deferred Outflows Of Resources	\$586,290			\$586,290	

Amounts Expressed in Whole Dollars	<u>Food Service</u> <u>(51)</u>	<u>Child Care</u> <u>Operations</u> <u>(52)</u>	<u>Other Enterprise</u> <u>(58)</u>	<u>TOTAL</u>	<u>Internal Service</u> <u>(60)</u>
Liabilities And Deferred Inflows Of Resources And Net Position					
Current Liabilities					
0400 Due to Other Funds	176,108			176,108	
0411 Due to Other Governments					
0413 Due to Component Unit					
0420 Accounts Payable	41,003			41,003	
0430 Contracts Payable					
0440 Current Portion of Long-Term Debt					
0450 Short-Term Payables					
0461 Accrued Salaries and Benefits					
0462 Payroll Deductions and Withholding					
0480 Unearned Revenues	24,453			24,453	
0490 Other Current Liabilities					
Total Current Liabilities	\$241,564			\$241,564	
Noncurrent Liabilities					
0510 Bonds Payable					
0520 Extended-Term Financing Agreements Payable					
0530 Lease-Purchase Obligations					
0540 Accumulated Compensated Absences					
0550 Authority Lease Obligations					
0560 Other Post-Employment Benefits (OPEB)					
0570 Net Pension Liability					
0599 Other Noncurrent Liabilities					
Total Noncurrent Liabilities					
Total Liabilities	\$241,564			\$241,564	
0950 Deferred Inflows of Resources					
Net Position					
0791 Net Investment in Capital Assets	428,435			428,435	
0008 Restricted Net Position (0792 – 0798)					
0799 Unrestricted Net Position	(83,709)			(83,709)	
Total Net Position	\$344,726			\$344,726	
Total Liabilities And Deferred Inflows Of Resources And Net Position	\$586,290			\$586,290	

Amounts Expressed in Whole Dollars	<u>Food Service</u> <u>(51)</u>	<u>Child Care Operations</u> <u>(52)</u>	<u>Other Enterprise</u> <u>(58)</u>	<u>TOTAL</u>	<u>Internal Service</u> <u>(60)</u>
Operating Revenues					
6600 Food Service Revenue	461,925			461,925	
0071 Charges for Services					
0072 Other Operating Revenue					
Total Operating Revenues	\$461,925			\$461,925	
Operating Expenses					
100 Personnel Services – Salaries	8,166			8,166	
200 Personnel Services – Employee Benefits	2,325			2,325	
300 Purchased Professional and Technical Services					
400 Purchased Property Services	50,495			50,495	
500 Other Purchased Services	1,101,760			1,101,760	
600 Supplies	107,849			107,849	
740 Depreciation	51,461			51,461	
810 Dues and Fees	397			397	
890 Miscellaneous Expenditures	694			694	
Total Operating Expenses	\$1,323,147			\$1,323,147	
Operating Income (Loss)	(\$861,222)			(\$861,222)	
Non Operating Revenues (Expenses)					
6500 Earnings on Investments					
6920 Contributions and Donations from Private Sources					
6930 Gains or Losses on Sale of Fixed Assets					
6991 Refunds of a Prior Year Expenditure					
7000 Revenue from State Sources	38,386			38,386	
8000 Revenue from Federal Sources	876,242			876,242	
9990 Insurance Recoveries					
820 Claims and Judgments Against the LEA					
830 Interest					
TOTAL Non Operating Revenues (Expenses)	\$914,628			\$914,628	
Income (Loss) Before Contributions And Transfers	\$53,406			\$53,406	

Amounts Expressed in Whole Dollars	<u>Food Service</u> <u>(51)</u>	<u>Child Care Operations</u> <u>(52)</u>	<u>Other Enterprise</u> <u>(58)</u>	<u>TOTAL</u>	<u>Internal Service</u> <u>(60)</u>
Contributions, Transfers, and Special and Extraordinary Items					
5200 Interfund Transfers – Out					
5300 Transfers Out to Component Units/Primary Governments					
5520 Special Items – Losses					
5530 Extraordinary Items – Losses					
9300 Interfund Transfers - IN					
9500 Capital Contributions					
9700 Transfers IN From Component Units/Primary Governments					
9920 Special Items – Gains					
9930 Extraordinary Items – Gains					
Change In Net Position	\$53,406			\$53,406	
0002 Net Position - Beginning of Fiscal Year	291,318			291,318	
0003 Accounting Changes / Residual Equity Transfers					
Net Position - End Of Year	\$344,724			\$344,724	

Amounts Expressed in Whole Dollars	<u>Food Service</u> <u>(51)</u>	<u>Child Care Operations</u> <u>(52)</u>	<u>Other Enterprise</u> <u>(58)</u>	<u>TOTAL</u>	<u>Internal Service(60)</u>
Cash Flows From Operating Activities					
0011 Cash Receipts From Users	462,855			462,855	
0012 Cash Receipts From Assessments Made to Other Funds					
0013 Cash Receipts From Earnings on Investments					
0014 Cash Receipts From Other Operating Revenue					
0015 Cash Payments To Employees For Services	10,491			10,491	
0016 Cash Payments For Insurance Claims					
0017 Cash Payments To Suppliers For Goods and Services	1,206,724			1,206,724	
0018 Cash Payments For Other Operating Expenses					
Net Cash Provided By (Used For) Operating Activities	(\$754,360)			(\$754,360)	
Cash Flows From Non-Capital Financing Activities					
0021 Receipts From Local Sources - 6000					
0022 Receipts From State Sources - 7000	33,953			33,953	
0023 Receipts From Federal Sources -8000	786,132			786,132	
0024 Notes and Loans Received (Repaid)					
0025 Interest Paid on Notes/Loans - 5100-830					
0026 Operating Transfers In (Out)/Residual Equity Trans					
0027 Operating Transfers In (Out) Primary Government / Comp Unit					
0028 Receipts From Refund of Prior Year Expenditures - 6991					
0029 Special and Extraordinary Gains (losses)					
0030 Receipts from Insurance Recoveries -9990					
Net Cash Prov By (Used for) Non-Capital Financing Activities	\$820,085			\$820,085	
Cash Flows From Capital and Related Financing Activities					
0031 Payments For Fac Acq, Const, and Imp - 4000	(21,851)			(21,851)	
0032 Gain / (Loss) on Sale of Fixed Assets - 6930					
0033 Proceeds From Extended Term Financing - 9200					
0034 Principal Paid on Financing Agreements	(15,000)			(15,000)	
0035 Interest Paid on Financing Agreements - 5100-830					
0036 (Inc) Dec in Contributed Capital					
Net Cash Prov By (Used for) Capital and Related Financing Activities	(\$36,851)			(\$36,851)	
Cash Flows From Investing Activities					
0041 Earnings on Investments - 6500					
0042 Purchase of Inv Securities / Deposits to Inv Pools					
0043 Receipts From Investment Pool Withdrawals					
0044 Proceeds from Sale and Maturity of Inv Securities					

LEA : 125235103 Interboro SD

Printed 11/14/2019 1:20:03 PM

0045 Loans Received (Paid)

Net Cash Prov By (Used for) Investing Activities

LEA : 125235103 Interboro SD

Printed 11/14/2019 1:20:03 PM

	<u>Food Service</u> <u>(51)</u>	<u>Child Care Operations</u> <u>(52)</u>	<u>Other Enterprise</u> <u>(58)</u>	<u>TOTAL</u>	<u>Internal Service</u> <u>(60)</u>
Net Increase (Decrease) in Cash Flows	28,874			28,874	
0004 Cash and Cash Equivalents Beginning of Year	3,152			3,152	
Cash and Cash Equivalents at Year End	\$32,026			\$32,026	

Reconciliation of Operating Income (Loss) To Net Cash Provided by (Used For) Operating Activities

0005 Operating Income (Loss) per REP	(861,222)			(861,222)	
Adjustments					
0051 Depreciation and Net Amortization	51,461			51,461	
0052 Provision for Uncollectible Accounts					
0053 Other Adjustments					
Effect of Changes in Assets, Liabilities, Deferred Outflows and Deferred Inflows					
0054 (Inc) Dec In Accounts Receivable (0120-0150)					
0055 Advances to Other Funds (0160)					
0056 (Inc) Dec in Inventories (0170)	898			898	
0057 (Inc) Dec in Prepaid Expenses (0180)					
0058 (Inc) Dec in Other Current or Noncurrent Assets					
0064 Deferred Outflows (0910)					
0059 Inc (Dec) in Accounts Payable (0400-0450)	(2,963)			(2,963)	
0060 Inc (Dec) in Accrued Salaries/Benefits (0461)					
0065 Inc (Dec) in Net Pension Liabilities (0570)					
0066 Inc (Dec) in Other Postemp Benefit Oblig (0560)					
0061 Inc (Dec) in Payroll Deductions/Withholding (0462)					
0062 Inc (Dec) in Unearned Revenue (0480)	930			930	
0063 Inc (Dec) in Other Current or Noncurrent Liabilities	56,535			56,535	
0067 Deferred Inflows (0950)					
Total Adjustments	\$106,861			\$106,861	
Cash Provided By (Used for) Total	(\$754,361)			(\$754,361)	

COMBINED STATEMENT OF CASH FLOWS
SCHEDULE OF NONCASH INVESTING, CAPITAL, AND FINANCING ACTIVITIES

Explanation of Transaction and Balance Sheet Effect	Amount
Donated commodities received	101,283
Donated commodities used	102,182
Total	\$203,465

LEA : 125235103 Interboro SD

Printed 11/14/2019 1:20:06 PM

Amounts Expressed in Whole Dollars

	<u>Private Purpose Trust</u> (71)	<u>Investment Trust</u> (72)	<u>Pension Trust</u> (73)	<u>Activity</u> (81)
Assets And Deferred Outflows Of Resources				
Assets				
0100 Cash and Cash Equivalents	38,769			109,260
0110 Investments				
0130 Due From Other Funds				6,515
0147 Due from Component Unit				
0150 Other Receivables				
0170 Inventories				
0180 Prepaid Expenses (Expenditures)				
0190 Other Current Assets				
0220 Buildings and Building Improvements (Net)				
0230 Machinery, Equipment and Furniture (Net)				
Total Assets	\$38,769			\$115,775
0910 Deferred Outflows of Resources				
Total Assets And Deferred Outflows Of Resources	\$38,769			\$115,775

LEA : 125235103 Interboro SD

Printed 11/14/2019 1:20:06 PM

Amounts Expressed in Whole Dollars

<u>Other Agency</u>	<u>Discrete Component Units</u>	<u>Discrete Component Units</u>	<u>Total Fiduciary Funds</u>
(89)	(98)	(99)	

Assets And Deferred Outflows Of Resources

Assets

0100 Cash and Cash Equivalents			148,029
0110 Investments			
0130 Due From Other Funds			6,515
0147 Due from Component Unit			
0150 Other Receivables			
0170 Inventories			
0180 Prepaid Expenses (Expenditures)			
0190 Other Current Assets			
0220 Buildings and Building Improvements (Net)			
0230 Machinery, Equipment and Furniture (Net)			

Total Assets			\$154,544
---------------------	--	--	------------------

0910 Deferred Outflows of Resources

Total Assets And Deferred Outflows Of Resources			\$154,544
--	--	--	------------------

LEA : 125235103 Interboro SD

Printed 11/14/2019 1:20:06 PM

Amounts Expressed in Whole Dollars	<u>Private Purpose Trust</u> (71)	<u>Investment Trust</u> (72)	<u>Pension Trust</u> (73)	<u>Activity</u> (81)
Liabilities, Deferred Inflows Of Resources And Net Position				
Liabilities				
0400 Due to Other Funds				
0411 Due to Other Governments				
0412 Due to Primary Government				
0413 Due to Component Unit				
0420 Accounts Payable				18,843
0430 Contracts Payable				
0450 Short-Term Payables				
0461 Accrued Salaries and Benefits				
0462 Payroll Deductions and Withholding				
0480 Unearned Revenues				
0490 Other Current Liabilities				96,932
Total Liabilities				\$115,775
0950 Deferred Inflows of Resources				
Net Position				
0791 Net Investment in Capital Assets				
0009 Restricted Net Position (0792 – 0798)	38,769			
0799 Unrestricted Net Position				
Total Net Position	\$38,769			
Total Liabilities, Deferred Inflows Of Resources And Net Position	\$38,769			\$115,775

LEA : 125235103 Interboro SD

Printed 11/14/2019 1:20:06 PM

Amounts Expressed in Whole Dollars	<u>Other Agency</u> (89)	<u>Discrete Component Units</u> (98)	<u>Discrete Component Units</u> (99)	<u>Total Fiduciary Funds</u>
Liabilities, Deferred Inflows Of Resources And Net Position				
Liabilities				
0400 Due to Other Funds				
0411 Due to Other Governments				
0412 Due to Primary Government				
0413 Due to Component Unit				
0420 Accounts Payable				18,843
0430 Contracts Payable				
0450 Short-Term Payables				
0461 Accrued Salaries and Benefits				
0462 Payroll Deductions and Withholding				
0480 Unearned Revenues				
0490 Other Current Liabilities				96,932
Total Liabilities				\$115,775
0950 Deferred Inflows of Resources				
Net Position				
0791 Net Investment in Capital Assets				
0009 Restricted Net Position (0792 – 0798)				38,769
0799 Unrestricted Net Position				
Total Net Position				\$38,769
Total Liabilities, Deferred Inflows Of Resources And Net Position				\$154,544

Amounts Expressed in Whole Dollars	<u>Private Purpose Trust</u> <u>(71)</u>	<u>Investment Trust</u> <u>(72)</u>	<u>Pension Trust</u> <u>(73)</u>	<u>Discrete Component</u> <u>Units</u> <u>(98)</u>	<u>Discrete Component</u> <u>Units</u> <u>(99)</u>	<u>Total Fiduciary</u> <u>Funds</u>
Additions						
0091 Gifts and Contributions	37,314					37,314
0092 Other Additions						
Deductions						
0093 Scholarships Awarded	41,800					41,800
0094 Other Deductions						
Change In Net Position	(\$4,486)					(\$4,486)
0006 Net Position – Beginning of Fiscal Year	43,255					43,255
0007 Net Position Held in Trust for Pension Benefits						
Net Position - End of Fiscal Year	\$38,769					\$38,769

	<u>Revenue Reported In Current Year</u>	<u>Current Year Tax Accrual</u>	<u>Prior Year Tax Accrual</u>	<u>Taxes Collected In Current Year</u>
<u>Revenue from Local Sources</u>				
6111 Current Real Estate Taxes	38,712,987.79			38,712,987.79
6112 Interim Real Estate Taxes	29,470.25			29,470.25
6113 Public Utility Realty Taxes	39,087.88			39,087.88
6114 Payments in Lieu of Current Taxes - State / Local	65,788.74			65,788.74
6115 Payments in Lieu of Current Taxes - Federal	5,138.00			5,138.00
6153 Current Act 511 Real Estate Transfer Taxes	374,553.67	61,016.58	142,245.27	455,782.36
6159 Current Act 511 Taxes, Other Proportional Assessments	571,059.88	56,683.00	56,688.47	571,065.35
6411 Delinquent Real Estate Taxes	1,415,738.80	230,230.76	258,292.92	1,443,800.96
6500 Earnings on Investments	34,685.19			
6700 Revenues from LEA Activities	46,461.73			
6832 Federal IDEA Revenue Received as Pass Through	651,922.00			
6910 Rentals	4,750.00			
6920 Contributions and Donations from Private Sources	8,248.04			
6942 Summer School Tuition	10,566.00			
6991 Refunds of a Prior Year Expenditure	329,290.32			
6992 Energy Efficiency Revenues and Incentives	5,590.96			
6999 Other Revenues Not Specified Above	874,029.31			
TOTAL Revenue from Local Sources	\$43,179,368.56	\$347,930.34	\$457,226.66	\$41,323,121.33

**Revenue Reported
In Current Year**

Revenue from State Sources

7110 Basic Education Funding	9,037,531.67		
7160 Tuition for Orphans Subsidy	82,387.02		
7271 Special Education funds for School-Aged Pupils	2,244,805.49		
7292 Pre-K Counts	289,000.00		
7299 Program Revenues Not Listed Previously in the 7200 Series	1,946.84		
7311 Pupil Transportation Subsidy	372,511.44		
7312 Nonpublic and Charter School Pupil Transportation Subsidy	73,150.00		
7320 Rental and Sinking Fund Payments / Building Reimbursement Subsidy	442,170.79		
7330 Health Services (Medical, Dental, Nurse, Act 25)	60,323.90		
7340 State Property Tax Reduction Allocation	2,021,239.45		
7505 Ready to Learn Block Grant	554,903.00		
7506 PAsmart Grants	1,849.19		
7810 State Share of Social Security and Medicare Taxes	1,463,002.64		
7820 State Share of Retirement Contributions	5,833,914.12		
TOTAL Revenue from State Sources	\$22,478,735.55		

**Revenue Reported
In Current Year**

Revenue from Federal Sources

8514 NCLB, Title I - Improving the Academic Achievement of the Disadvantaged	485,045.12			
8515 NCLB, Title II - Preparing, Training and Recruiting High Quality Teachers and Principals	103,453.23			
8517 NCLB, Title IV - 21St Century Schools	11,847.67			
8810 School-Based Access Medicaid Reimbursement Program (SBAP) Reimbursements (Access)	39,924.70			
8820 Medical Assistance Reimbursement for Administrative Claiming (Quarterly) Program	17,725.16			
TOTAL Revenue from Federal Sources	\$657,995.88			
TOTAL FROM ALL SOURCES	\$66,316,099.99	\$347,930.34	\$457,226.66	\$41,323,121.33

Revenue from Local Sources	43,179,368.56
Revenue from State Sources	22,478,735.55
Revenue from Federal Sources	657,995.88
Other Financing Sources	
TOTAL FROM ALL SOURCES	\$66,316,099.99

General Fund (10)

		<u>Total</u>
1000 Instruction		
100 Personnel Services – Salaries		
100 Personnel Services – Salaries		22,238,509.98
Total Personnel Services – Salaries		\$22,238,509.98
200 Personnel Services – Employee Benefits		
210 Group Insurance – Contracted Provider		3,163,685.65
220 Social Security Contributions		1,683,122.13
230 PSERS Retirement Contributions		7,243,020.66
250 Unemployment Compensation		18,796.78
260 Workers' Compensation		243,122.85
270 Group Insurance – Self-Insurance		1,077,035.11
280 Other Post-Employment Benefits (OPEB)		181,004.49
291 Other Retirement Plans		90,163.94
Total Personnel Services – Employee Benefits		\$13,699,951.61
300 Purchased Professional and Technical Services		
322 Professional Educational Services – Ius		617,261.40
329 Professional Educational Services – Other		88,548.40
330 Other Professional Services		251,265.88
Total Purchased Professional and Technical Services		\$957,075.68
400 Purchased Property Services		
430 Repairs and Maintenance Services		8,585.91
440 Rentals		169,395.29
Total Purchased Property Services		\$177,981.20
500 Other Purchased Services		
530 Communications		6,123.62
549 Other Advertising/Public Relations		935.00
561 Tuition To Other School Districts Within the State		73,326.88
562 Tuition To Pennsylvania Charter Schools		563,221.72
563 Tuition To Nonpublic Schools		705,628.94
564 Tuition To Career and Technology Centers		996,191.00
566 Tuition To Institutions of Higher Education and Technical Institutes		370,181.00
567 Tuition To Approved Private Schools (APS) and PA Chartered Schools for the Deaf and Blind		609,698.11
568 Tuition To Private Residential Rehabilitative Institutions (PRRI) [In-State] and Detention Centers		66,913.71
569 Tuition – Other		776.00
591 Services Purchased Locally		3,880.00
597 Direct Payments To Intermediate Units for Institutionalized Childrens' Program		163,845.28
Total Other Purchased Services		\$3,560,721.26
600 Supplies		
610 General Supplies		269,756.67
630 Food		4,406.77
640 Books and Periodicals		38,129.51
650 Supplies & Fees – Technology Related		67,436.49
Total Supplies		\$379,729.44

LEA : 125235103 Interboro SD

Printed 11/14/2019 1:20:18 PM

General Fund (10)

1000 Instruction	<u>Total</u>
700 <u>Property</u>	
752 Capital Equipment – Original and Additional	117,543.12
Total Property	\$117,543.12
800 <u>Other Objects</u>	
810 Dues and Fees	3,275.00
820 Claims and Judgments Against the LEA	12,098.84
890 Miscellaneous Expenditures	111,712.13
Total Other Objects	\$127,085.97
Total 1000 Instruction	\$41,258,598.26

LEA : 125235103 Interboro SD

Printed 11/14/2019 1:20:18 PM

Page - 3 of 25

General Fund (10)**1100 Regular Programs – Elementary / Secondary**

	<u>Elementary</u>	<u>Secondary</u>	<u>Federal</u>	<u>Total</u>
100 Personnel Services – Salaries				
100 Personnel Services – Salaries	7,329,609.41	9,258,708.15	331,862.37	16,920,179.93
Total Personnel Services – Salaries	\$7,329,609.41	\$9,258,708.15	\$331,862.37	\$16,920,179.93
200 Personnel Services – Employee Benefits				
210 Group Insurance – Contracted Provider	1,133,577.54	1,346,292.85	52,504.84	2,532,375.23
220 Social Security Contributions	554,185.76	701,618.35	24,296.83	1,280,100.94
230 PSERS Retirement Contributions	2,397,344.91	3,002,243.32	107,378.51	5,506,966.74
250 Unemployment Compensation	6,187.87	7,826.42	321.21	14,335.50
260 Workers' Compensation	79,936.17	101,767.85	2,890.74	184,594.76
270 Group Insurance – Self-Insurance	385,458.71	455,446.12	16,322.99	857,227.82
280 Other Post-Employment Benefits (OPEB)	103,575.49	77,429.00		181,004.49
291 Other Retirement Plans	39,945.62	33,093.32		73,038.94
Total Personnel Services – Employee Benefits	\$4,700,212.07	\$5,725,717.23	\$203,715.12	\$10,629,644.42
300 Purchased Professional and Technical Services				
322 Professional Educational Services – Ius	68,271.27	64,703.26		132,974.53
329 Professional Educational Services – Other		57,712.83		57,712.83
Total Purchased Professional and Technical Services	\$68,271.27	\$122,416.09		\$190,687.36
400 Purchased Property Services				
430 Repairs and Maintenance Services	237.00	2,525.10		2,762.10
440 Rentals		10,930.00		10,930.00
Total Purchased Property Services	\$237.00	\$13,455.10		\$13,692.10
500 Other Purchased Services				
530 Communications	2,379.44	3,744.18		6,123.62
562 Tuition To Pennsylvania Charter Schools	89,318.22	250,887.69		340,205.91
591 Services Purchased Locally			3,880.00	3,880.00
Total Other Purchased Services	\$91,697.66	\$254,631.87	\$3,880.00	\$350,209.53
600 Supplies				
610 General Supplies	59,722.39	116,837.48	10,271.54	186,831.41
640 Books and Periodicals	10,998.57	25,325.28		36,323.85
650 Supplies & Fees – Technology Related	42,136.29	21,810.00	199.00	64,145.29
Total Supplies	\$112,857.25	\$163,972.76	\$10,470.54	\$287,300.55
700 Property				
752 Capital Equipment – Original and Additional	50,053.41	58,340.62		108,394.03
Total Property	\$50,053.41	\$58,340.62		\$108,394.03
800 Other Objects				
810 Dues and Fees		3,275.00		3,275.00
890 Miscellaneous Expenditures	3,023.83	13,751.27		16,775.10
Total Other Objects	\$3,023.83	\$17,026.27		\$20,050.10
Total 1100 Regular Programs – Elementary / Secondary	\$12,355,961.90	\$15,614,268.09	\$549,928.03	\$28,520,158.02

General Fund (10)

1110 Regular Programs

	<u>Elementary</u>	<u>Secondary</u>	<u>Federal</u>	<u>Total</u>
100 Personnel Services – Salaries				
100 Personnel Services – Salaries	7,329,609.41	9,258,708.15		16,588,317.56
Total Personnel Services – Salaries	\$7,329,609.41	\$9,258,708.15		\$16,588,317.56
200 Personnel Services – Employee Benefits				
210 Group Insurance – Contracted Provider	1,133,577.54	1,346,292.85		2,479,870.39
220 Social Security Contributions	554,185.76	701,618.35		1,255,804.11
230 PSERS Retirement Contributions	2,397,344.91	3,002,243.32		5,399,588.23
250 Unemployment Compensation	6,187.87	7,826.42		14,014.29
260 Workers' Compensation	79,936.17	101,767.85		181,704.02
270 Group Insurance – Self-Insurance	385,458.71	455,446.12		840,904.83
280 Other Post-Employment Benefits (OPEB)	103,575.49	77,429.00		181,004.49
291 Other Retirement Plans	39,945.62	33,093.32		73,038.94
Total Personnel Services – Employee Benefits	\$4,700,212.07	\$5,725,717.23		\$10,425,929.30
300 Purchased Professional and Technical Services				
322 Professional Educational Services – Ius	68,271.27	64,703.26		132,974.53
329 Professional Educational Services – Other		57,712.83		57,712.83
Total Purchased Professional and Technical Services	\$68,271.27	\$122,416.09		\$190,687.36
400 Purchased Property Services				
430 Repairs and Maintenance Services	237.00	2,525.10		2,762.10
440 Rentals		10,930.00		10,930.00
Total Purchased Property Services	\$237.00	\$13,455.10		\$13,692.10
500 Other Purchased Services				
530 Communications	2,379.44	3,744.18		6,123.62
562 Tuition To Pennsylvania Charter Schools	89,318.22	250,887.69		340,205.91
Total Other Purchased Services	\$91,697.66	\$254,631.87		\$346,329.53
600 Supplies				
610 General Supplies	59,722.39	116,837.48		176,559.87
640 Books and Periodicals	10,998.57	25,325.28		36,323.85
650 Supplies & Fees – Technology Related	42,136.29	21,810.00		63,946.29
Total Supplies	\$112,857.25	\$163,972.76		\$276,830.01
700 Property				
752 Capital Equipment – Original and Additional	50,053.41	58,340.62		108,394.03
Total Property	\$50,053.41	\$58,340.62		\$108,394.03
800 Other Objects				
810 Dues and Fees		3,275.00		3,275.00
890 Miscellaneous Expenditures	3,023.83	13,751.27		16,775.10
Total Other Objects	\$3,023.83	\$17,026.27		\$20,050.10
Total 1110 Regular Programs	\$12,355,961.90	\$15,614,268.09		\$27,970,229.99

General Fund (10)

	<u>Elementary</u>	<u>Secondary</u>	<u>Federal</u>	<u>Total</u>
1190 Federally-Funded Regular Programs				
100 Personnel Services – Salaries				
100 Personnel Services – Salaries			331,862.37	331,862.37
Total Personnel Services – Salaries			\$331,862.37	\$331,862.37
200 Personnel Services – Employee Benefits				
210 Group Insurance – Contracted Provider			52,504.84	52,504.84
220 Social Security Contributions			24,296.83	24,296.83
230 PSERS Retirement Contributions			107,378.51	107,378.51
250 Unemployment Compensation			321.21	321.21
260 Workers' Compensation			2,890.74	2,890.74
270 Group Insurance – Self-Insurance			16,322.99	16,322.99
Total Personnel Services – Employee Benefits			\$203,715.12	\$203,715.12
500 Other Purchased Services				
591 Services Purchased Locally			3,880.00	3,880.00
Total Other Purchased Services			\$3,880.00	\$3,880.00
600 Supplies				
610 General Supplies			10,271.54	10,271.54
650 Supplies & Fees – Technology Related			199.00	199.00
Total Supplies			\$10,470.54	\$10,470.54
Total 1190 Federally-Funded Regular Programs			\$549,928.03	\$549,928.03

LEA : 125235103 Interboro SD

Printed 11/14/2019 1:20:18 PM

General Fund (10)

1200 Special Programs – Elementary / Secondary

	<u>Elementary</u>	<u>Secondary</u>	<u>Federal</u>	<u>Total</u>
100 Personnel Services – Salaries				
100 Personnel Services – Salaries	2,650,435.14	2,361,553.67		5,011,988.81
Total Personnel Services – Salaries	\$2,650,435.14	\$2,361,553.67		\$5,011,988.81
200 Personnel Services – Employee Benefits				
210 Group Insurance – Contracted Provider	265,659.92	343,220.23		608,880.15
220 Social Security Contributions	201,223.82	178,439.19		379,663.01
230 PSERS Retirement Contributions	845,170.75	795,562.28		1,640,733.03
250 Unemployment Compensation	2,170.31	2,024.17		4,194.48
260 Workers' Compensation	28,880.97	26,573.55		55,454.52
270 Group Insurance – Self-Insurance	94,782.81	117,484.79		212,267.60
291 Other Retirement Plans	1,000.00	16,125.00		17,125.00
Total Personnel Services – Employee Benefits	\$1,438,888.58	\$1,479,429.21		\$2,918,317.79
300 Purchased Professional and Technical Services				
322 Professional Educational Services – Ius	62,992.46	80,547.46	293,239.05	436,778.97
329 Professional Educational Services – Other	1,500.00	29,335.57		30,835.57
330 Other Professional Services	58,599.31	2,810.00	186,032.25	247,441.56
Total Purchased Professional and Technical Services	\$123,091.77	\$112,693.03	\$479,271.30	\$715,056.10
400 Purchased Property Services				
430 Repairs and Maintenance Services		1,118.99	215.00	1,333.99
440 Rentals	79,232.64	79,232.65		158,465.29
Total Purchased Property Services	\$79,232.64	\$80,351.64	\$215.00	\$159,799.28
500 Other Purchased Services				
561 Tuition To Other School Districts Within the State	11,407.27	40,955.58		52,362.85
562 Tuition To Pennsylvania Charter Schools	36,804.12	183,688.38		220,492.50
563 Tuition To Nonpublic Schools	305,404.89	319,523.67	32,491.47	657,420.03
567 Tuition To Approved Private Schools (APS) and PA Chartered Schools for the Deaf and Blind	241,912.76	299,110.35	68,675.00	609,698.11
568 Tuition To Private Residential Rehabilitative Institutions (PRRI) [In-State] and Detention Centers	50,709.89	12,198.96		62,908.85
569 Tuition – Other	100.00			100.00
Total Other Purchased Services	\$646,338.93	\$855,476.94	\$101,166.47	\$1,602,982.34
600 Supplies				
610 General Supplies	11,678.96	16,505.34	12,986.90	41,171.20
650 Supplies & Fees – Technology Related	1,017.54	2,273.66		3,291.20
Total Supplies	\$12,696.50	\$18,779.00	\$12,986.90	\$44,462.40
800 Other Objects				
820 Claims and Judgments Against the LEA	12,098.84			12,098.84
890 Miscellaneous Expenditures	866.49	253.92		1,120.41
Total Other Objects	\$12,965.33	\$253.92		\$13,219.25
Total 1200 Special Programs – Elementary / Secondary	\$4,963,648.89	\$4,908,537.41	\$593,639.67	\$10,465,825.97

General Fund (10)

1210 Life Skills Support

	<u>Elementary</u>	<u>Secondary</u>	<u>Federal</u>	<u>Total</u>
100 Personnel Services – Salaries				
100 Personnel Services – Salaries	225,120.40	188,383.32		413,503.72
Total Personnel Services – Salaries	\$225,120.40	\$188,383.32		\$413,503.72
200 Personnel Services – Employee Benefits				
210 Group Insurance – Contracted Provider	29,342.83	26,266.41		55,609.24
220 Social Security Contributions	17,127.22	14,238.84		31,366.06
230 PSERS Retirement Contributions	74,073.25	73,456.77		147,530.02
250 Unemployment Compensation	176.97	161.14		338.11
260 Workers' Compensation	2,385.04	2,070.14		4,455.18
270 Group Insurance – Self-Insurance	10,583.03	9,711.65		20,294.68
Total Personnel Services – Employee Benefits	\$133,688.34	\$125,904.95		\$259,593.29
500 Other Purchased Services				
567 Tuition To Approved Private Schools (APS) and PA Chartered Schools for the Deaf and Blind	612.00		8,650.60	9,262.60
Total Other Purchased Services	\$612.00		\$8,650.60	\$9,262.60
600 Supplies				
610 General Supplies		782.24		782.24
Total Supplies		\$782.24		\$782.24
Total 1210 Life Skills Support	\$359,420.74	\$315,070.51	\$8,650.60	\$683,141.85

General Fund (10)

	<u>Elementary</u>	<u>Secondary</u>	<u>Federal</u>	<u>Total</u>
1220 Sensory Support				
100 Personnel Services – Salaries				
100 Personnel Services – Salaries	254,297.09	101,906.37		356,203.46
Total Personnel Services – Salaries	\$254,297.09	\$101,906.37		\$356,203.46
200 Personnel Services – Employee Benefits				
210 Group Insurance – Contracted Provider	33,294.99	13,368.52		46,663.51
220 Social Security Contributions	19,164.95	7,679.57		26,844.52
230 PSERS Retirement Contributions	79,313.43	32,315.62		111,629.05
250 Unemployment Compensation	213.43	84.16		297.59
260 Workers' Compensation	2,755.36	1,105.84		3,861.20
270 Group Insurance – Self-Insurance	10,502.82	4,235.44		14,738.26
Total Personnel Services – Employee Benefits	\$145,244.98	\$58,789.15		\$204,034.13
300 Purchased Professional and Technical Services				
322 Professional Educational Services – Ius	23,039.13	20,321.36	89,078.39	132,438.88
329 Professional Educational Services – Other	1,500.00			1,500.00
330 Other Professional Services	12,846.27			12,846.27
Total Purchased Professional and Technical Services	\$37,385.40	\$20,321.36	\$89,078.39	\$146,785.15
500 Other Purchased Services				
561 Tuition To Other School Districts Within the State	11,407.27	11,133.53		22,540.80
563 Tuition To Nonpublic Schools	57,466.80			57,466.80
567 Tuition To Approved Private Schools (APS) and PA Chartered Schools for the Deaf and Blind		6,040.00		6,040.00
Total Other Purchased Services	\$68,874.07	\$17,173.53		\$86,047.60
600 Supplies				
610 General Supplies	419.47	555.77		975.24
Total Supplies	\$419.47	\$555.77		\$975.24
Total 1220 Sensory Support	\$506,221.01	\$198,746.18	\$89,078.39	\$794,045.58

General Fund (10)

1230 Emotional Support

	<u>Elementary</u>	<u>Secondary</u>	<u>Federal</u>	<u>Total</u>
100 Personnel Services – Salaries				
100 Personnel Services – Salaries	244,118.27	39,394.37		283,512.64
Total Personnel Services – Salaries	\$244,118.27	\$39,394.37		\$283,512.64
200 Personnel Services – Employee Benefits				
210 Group Insurance – Contracted Provider	39,243.49	301.51		39,545.00
220 Social Security Contributions	18,522.91	2,607.81		21,130.72
230 PSERS Retirement Contributions	78,909.00	11,674.14		90,583.14
250 Unemployment Compensation	214.13	32.95		247.08
260 Workers' Compensation	2,861.33	455.17		3,316.50
270 Group Insurance – Self-Insurance	14,716.56	2,239.45		16,956.01
291 Other Retirement Plans	500.00			500.00
Total Personnel Services – Employee Benefits	\$154,967.42	\$17,311.03		\$172,278.45
300 Purchased Professional and Technical Services				
322 Professional Educational Services – Ius	39,953.33	30,174.22	142,798.86	212,926.41
330 Other Professional Services	21,484.60	2,810.00	53,676.40	77,971.00
Total Purchased Professional and Technical Services	\$61,437.93	\$32,984.22	\$196,475.26	\$290,897.41
500 Other Purchased Services				
561 Tuition To Other School Districts Within the State		29,822.05		29,822.05
563 Tuition To Nonpublic Schools	119,740.90	287,493.67	32,491.47	439,726.04
567 Tuition To Approved Private Schools (APS) and PA Chartered Schools for the Deaf and Blind	77,222.00	128,991.60	52,194.40	258,408.00
568 Tuition To Private Residential Rehabilitative Institutions (PRRI) [In-State] and Detention Centers	50,693.00	6,533.56		57,226.56
Total Other Purchased Services	\$247,655.90	\$452,840.88	\$84,685.87	\$785,182.65
600 Supplies				
610 General Supplies	34.98	34.97		69.95
650 Supplies & Fees – Technology Related		270.00		270.00
Total Supplies	\$34.98	\$304.97		\$339.95
Total 1230 Emotional Support	\$708,214.50	\$542,835.47	\$281,161.13	\$1,532,211.10

General Fund (10)

1240 Academic Support

	<u>Elementary</u>	<u>Secondary</u>	<u>Federal</u>	<u>Total</u>
100 Personnel Services – Salaries				
100 Personnel Services – Salaries	1,901,529.92	2,031,869.61		3,933,399.53
Total Personnel Services – Salaries	\$1,901,529.92	\$2,031,869.61		\$3,933,399.53
200 Personnel Services – Employee Benefits				
210 Group Insurance – Contracted Provider	163,658.18	303,283.79		466,941.97
220 Social Security Contributions	144,467.95	153,912.97		298,380.92
230 PSERS Retirement Contributions	612,875.07	678,115.75		1,290,990.82
250 Unemployment Compensation	1,536.03	1,745.92		3,281.95
260 Workers' Compensation	20,529.49	22,942.40		43,471.89
270 Group Insurance – Self-Insurance	58,980.40	101,298.25		160,278.65
291 Other Retirement Plans	500.00	16,125.00		16,625.00
Total Personnel Services – Employee Benefits	\$1,002,547.12	\$1,277,424.08		\$2,279,971.20
300 Purchased Professional and Technical Services				
322 Professional Educational Services – Ius		11,225.36	22,920.60	34,145.96
329 Professional Educational Services – Other		29,279.00		29,279.00
Total Purchased Professional and Technical Services		\$40,504.36	\$22,920.60	\$63,424.96
400 Purchased Property Services				
430 Repairs and Maintenance Services		1,118.99	215.00	1,333.99
Total Purchased Property Services		\$1,118.99	\$215.00	\$1,333.99
500 Other Purchased Services				
562 Tuition To Pennsylvania Charter Schools	36,804.12	183,688.38		220,492.50
563 Tuition To Nonpublic Schools		32,030.00		32,030.00
Total Other Purchased Services	\$36,804.12	\$215,718.38		\$252,522.50
600 Supplies				
610 General Supplies	11,224.51	15,132.36	12,986.90	39,343.77
650 Supplies & Fees – Technology Related	1,017.54	2,003.66		3,021.20
Total Supplies	\$12,242.05	\$17,136.02	\$12,986.90	\$42,364.97
800 Other Objects				
820 Claims and Judgments Against the LEA	12,098.84			12,098.84
890 Miscellaneous Expenditures	866.49			866.49
Total Other Objects	\$12,965.33			\$12,965.33
Total 1240 Academic Support	\$2,966,088.54	\$3,583,771.44	\$36,122.50	\$6,585,982.48

General Fund (10)

	<u>Elementary</u>	<u>Secondary</u>	<u>Federal</u>	<u>Total</u>
1241 Learning Support – Public				
100 Personnel Services – Salaries				
100 Personnel Services – Salaries	1,837,099.89	1,941,620.62		3,778,720.51
Total Personnel Services – Salaries	\$1,837,099.89	\$1,941,620.62		\$3,778,720.51
200 Personnel Services – Employee Benefits				
210 Group Insurance – Contracted Provider	163,151.14	286,748.66		449,899.80
220 Social Security Contributions	139,734.05	147,276.76		287,010.81
230 PSERS Retirement Contributions	594,047.49	645,170.16		1,239,217.65
250 Unemployment Compensation	1,481.99	1,670.80		3,152.79
260 Workers' Compensation	19,822.02	21,952.44		41,774.46
270 Group Insurance – Self-Insurance	57,014.78	96,254.08		153,268.86
291 Other Retirement Plans	500.00	16,125.00		16,625.00
Total Personnel Services – Employee Benefits	\$975,751.47	\$1,215,197.90		\$2,190,949.37
300 Purchased Professional and Technical Services				
322 Professional Educational Services – Ius		11,225.36	22,920.60	34,145.96
329 Professional Educational Services – Other		29,279.00		29,279.00
Total Purchased Professional and Technical Services		\$40,504.36	\$22,920.60	\$63,424.96
400 Purchased Property Services				
430 Repairs and Maintenance Services		1,118.99	215.00	1,333.99
Total Purchased Property Services		\$1,118.99	\$215.00	\$1,333.99
500 Other Purchased Services				
562 Tuition To Pennsylvania Charter Schools	36,804.12	183,688.38		220,492.50
563 Tuition To Nonpublic Schools		32,030.00		32,030.00
Total Other Purchased Services	\$36,804.12	\$215,718.38		\$252,522.50
600 Supplies				
610 General Supplies	10,486.92	14,024.27	12,986.90	37,498.09
650 Supplies & Fees – Technology Related	1,017.54	840.00		1,857.54
Total Supplies	\$11,504.46	\$14,864.27	\$12,986.90	\$39,355.63
800 Other Objects				
820 Claims and Judgments Against the LEA	12,098.84			12,098.84
Total Other Objects	\$12,098.84			\$12,098.84
Total 1241 Learning Support – Public	\$2,873,258.78	\$3,429,024.52	\$36,122.50	\$6,338,405.80

General Fund (10)

1243 Gifted Support

	<u>Elementary</u>	<u>Secondary</u>	<u>Federal</u>	<u>Total</u>
100 Personnel Services – Salaries				
100 Personnel Services – Salaries	64,430.03	90,248.99		154,679.02
Total Personnel Services – Salaries	\$64,430.03	\$90,248.99		\$154,679.02
200 Personnel Services – Employee Benefits				
210 Group Insurance – Contracted Provider	507.04	16,535.13		17,042.17
220 Social Security Contributions	4,733.90	6,636.21		11,370.11
230 PSERS Retirement Contributions	18,827.58	32,945.59		51,773.17
250 Unemployment Compensation	54.04	75.12		129.16
260 Workers' Compensation	707.47	989.96		1,697.43
270 Group Insurance – Self-Insurance	1,965.62	5,044.17		7,009.79
Total Personnel Services – Employee Benefits	\$26,795.65	\$62,226.18		\$89,021.83
600 Supplies				
610 General Supplies	737.59	1,108.09		1,845.68
650 Supplies & Fees – Technology Related		1,163.66		1,163.66
Total Supplies	\$737.59	\$2,271.75		\$3,009.34
800 Other Objects				
890 Miscellaneous Expenditures	866.49			866.49
Total Other Objects	\$866.49			\$866.49
Total 1243 Gifted Support	\$92,829.76	\$154,746.92		\$247,576.68

General Fund (10)

1260 Physical Support

100 Personnel Services – Salaries

	<u>Elementary</u>	<u>Secondary</u>	<u>Federal</u>	<u>Total</u>
100 Personnel Services – Salaries	25,369.46			25,369.46
Total Personnel Services – Salaries	\$25,369.46			\$25,369.46

200 Personnel Services – Employee Benefits

210 Group Insurance – Contracted Provider	120.43			120.43
220 Social Security Contributions	1,940.79			1,940.79
250 Unemployment Compensation	29.75			29.75
260 Workers' Compensation	349.75			349.75

Total Personnel Services – Employee Benefits	\$2,440.72			\$2,440.72
---	-------------------	--	--	-------------------

Total 1260 Physical Support	\$27,810.18			\$27,810.18
------------------------------------	--------------------	--	--	--------------------

General Fund (10)

1270 Multi-Handicapped Support

300 Purchased Professional and Technical Services

	<u>Elementary</u>	<u>Secondary</u>	<u>Federal</u>	<u>Total</u>
322 Professional Educational Services – Ius		18,826.52	38,441.20	57,267.72
330 Other Professional Services	9,134.22		16,878.45	26,012.67
Total Purchased Professional and Technical Services	\$9,134.22	\$18,826.52	\$55,319.65	\$83,280.39

500 Other Purchased Services

563 Tuition To Nonpublic Schools	128,197.19			128,197.19
567 Tuition To Approved Private Schools (APS) and PA Chartered Schools for the Deaf and Blind			7,830.00	7,830.00
Total Other Purchased Services	\$128,197.19		\$7,830.00	\$136,027.19
Total 1270 Multi-Handicapped Support	\$137,331.41	\$18,826.52	\$63,149.65	\$219,307.58

General Fund (10)

1290 Special Programs - Other Support

300 Purchased Professional and Technical Services

329 Professional Educational Services – Other

330 Other Professional Services

Total Purchased Professional and Technical Services

400 Purchased Property Services

440 Rentals

Total Purchased Property Services

500 Other Purchased Services

567 Tuition To Approved Private Schools (APS) and PA Chartered Schools for the Deaf and Blind

568 Tuition To Private Residential Rehabilitative Institutions (PRRI) [In-State] and Detention Centers

569 Tuition – Other

Total Other Purchased Services

800 Other Objects

890 Miscellaneous Expenditures

Total Other Objects

Total 1290 Special Programs - Other Support

	<u>Elementary</u>	<u>Secondary</u>	<u>Federal</u>	<u>Total</u>
		56.57		56.57
	15,134.22		115,477.40	130,611.62
Total Purchased Professional and Technical Services	\$15,134.22	\$56.57	\$115,477.40	\$130,668.19
	79,232.64	79,232.65		158,465.29
Total Purchased Property Services	\$79,232.64	\$79,232.65		\$158,465.29
	164,078.76	164,078.75		328,157.51
	16.89	5,665.40		5,682.29
	100.00			100.00
Total Other Purchased Services	\$164,195.65	\$169,744.15		\$333,939.80
		253.92		253.92
Total Other Objects		\$253.92		\$253.92
Total 1290 Special Programs - Other Support	\$258,562.51	\$249,287.29	\$115,477.40	\$623,327.20

General Fund (10)

1300 Vocational Education

Elementary

Secondary

Federal

Total

500 Other Purchased Services

564 Tuition To Career and Technology Centers

996,191.00

996,191.00

Total Other Purchased Services

\$996,191.00

\$996,191.00

Total 1300 Vocational Education

\$996,191.00

\$996,191.00

General Fund (10)

	<u>Elementary</u>	<u>Secondary</u>	<u>Federal</u>	<u>Total</u>
1400 Other Instructional Programs – Elementary / Secondary				
100 Personnel Services – Salaries				
100 Personnel Services – Salaries	13,838.90	155,965.25		169,804.15
Total Personnel Services – Salaries	\$13,838.90	\$155,965.25		\$169,804.15
200 Personnel Services – Employee Benefits				
210 Group Insurance – Contracted Provider	9.58	31.49		41.07
220 Social Security Contributions	1,057.50	11,927.28		12,984.78
230 PSERS Retirement Contributions	4,634.02	45,851.82		50,485.84
250 Unemployment Compensation	13.84	116.32		130.16
260 Workers' Compensation	167.74	1,676.94		1,844.68
Total Personnel Services – Employee Benefits	\$5,882.68	\$59,603.85		\$65,486.53
300 Purchased Professional and Technical Services				
322 Professional Educational Services – lus		11,334.50	36,173.40	47,507.90
330 Other Professional Services		2,399.32		2,399.32
Total Purchased Professional and Technical Services		\$13,733.82	\$36,173.40	\$49,907.22
500 Other Purchased Services				
561 Tuition To Other School Districts Within the State		20,964.03		20,964.03
562 Tuition To Pennsylvania Charter Schools		2,523.31		2,523.31
563 Tuition To Nonpublic Schools		48,208.91		48,208.91
568 Tuition To Private Residential Rehabilitative Institutions (PRRI) [In-State] and Detention Centers	80.00	3,924.86		4,004.86
569 Tuition – Other		676.00		676.00
597 Direct Payments To Intermediate Units for Institutionalized Childrens' Program		163,845.28		163,845.28
Total Other Purchased Services	\$80.00	\$240,142.39		\$240,222.39
Total 1400 Other Instructional Programs – Elementary / Secondary	\$19,801.58	\$469,445.31	\$36,173.40	\$525,420.29

General Fund (10)

	<u>Elementary</u>	<u>Secondary</u>	<u>Federal</u>	<u>Total</u>
1420 Summer School				
100 Personnel Services – Salaries				
100 Personnel Services – Salaries	5,334.40	17,262.00		22,596.40
Total Personnel Services – Salaries	\$5,334.40	\$17,262.00		\$22,596.40
200 Personnel Services – Employee Benefits				
220 Social Security Contributions	408.08	1,320.33		1,728.41
230 PSERS Retirement Contributions	1,783.29	5,900.52		7,683.81
250 Unemployment Compensation	5.33	14.32		19.65
260 Workers' Compensation	48.00	206.43		254.43
Total Personnel Services – Employee Benefits	\$2,244.70	\$7,441.60		\$9,686.30
Total 1420 Summer School	\$7,579.10	\$24,703.60		\$32,282.70

General Fund (10)

1430 Homebound Instruction

100 Personnel Services – Salaries

100 Personnel Services – Salaries

Total Personnel Services – Salaries

200 Personnel Services – Employee Benefits

210 Group Insurance – Contracted Provider

220 Social Security Contributions

230 PSERS Retirement Contributions

250 Unemployment Compensation

260 Workers' Compensation

Total Personnel Services – Employee Benefits

Total 1430 Homebound Instruction

	<u>Elementary</u>	<u>Secondary</u>	<u>Federal</u>	<u>Total</u>
100 Personnel Services – Salaries	8,504.50	76,349.75		84,854.25
Total Personnel Services – Salaries	\$8,504.50	\$76,349.75		\$84,854.25
200 Personnel Services – Employee Benefits				
210 Group Insurance – Contracted Provider	9.58	31.49		41.07
220 Social Security Contributions	649.42	5,838.45		6,487.87
230 PSERS Retirement Contributions	2,850.73	19,106.78		21,957.51
250 Unemployment Compensation	8.51	47.51		56.02
260 Workers' Compensation	119.74	778.99		898.73
Total Personnel Services – Employee Benefits	\$3,637.98	\$25,803.22		\$29,441.20
Total 1430 Homebound Instruction	\$12,142.48	\$102,152.97		\$114,295.45

General Fund (10)

	<u>Elementary</u>	<u>Secondary</u>	<u>Federal</u>	<u>Total</u>
1440 Alternative Regular Education Programs				
100 Personnel Services – Salaries				
100 Personnel Services – Salaries		62,353.50		62,353.50
Total Personnel Services – Salaries		\$62,353.50		\$62,353.50
200 Personnel Services – Employee Benefits				
220 Social Security Contributions		4,768.50		4,768.50
230 PSERS Retirement Contributions		20,844.52		20,844.52
250 Unemployment Compensation		54.49		54.49
260 Workers' Compensation		691.52		691.52
Total Personnel Services – Employee Benefits		\$26,359.03		\$26,359.03
300 Purchased Professional and Technical Services				
322 Professional Educational Services – Ius		11,334.50	36,173.40	47,507.90
330 Other Professional Services		2,399.32		2,399.32
Total Purchased Professional and Technical Services		\$13,733.82	\$36,173.40	\$49,907.22
500 Other Purchased Services				
561 Tuition To Other School Districts Within the State		20,964.03		20,964.03
562 Tuition To Pennsylvania Charter Schools		2,523.31		2,523.31
563 Tuition To Nonpublic Schools		48,208.91		48,208.91
568 Tuition To Private Residential Rehabilitative Institutions (PRRI) [In-State] and Detention Centers	80.00	3,924.86		4,004.86
569 Tuition – Other		676.00		676.00
597 Direct Payments To Intermediate Units for Institutionalized Childrens' Program		163,845.28		163,845.28
Total Other Purchased Services	\$80.00	\$240,142.39		\$240,222.39
Total 1440 Alternative Regular Education Programs	\$80.00	\$342,588.74	\$36,173.40	\$378,842.14

General Fund (10)

1441 Adjudicated / Court-Placed Programs

500 Other Purchased Services

	<u>Elementary</u>	<u>Secondary</u>	<u>Federal</u>	<u>Total</u>
561 Tuition To Other School Districts Within the State		20,964.03		20,964.03
562 Tuition To Pennsylvania Charter Schools		2,523.31		2,523.31
569 Tuition – Other		676.00		676.00
597 Direct Payments To Intermediate Units for Institutionalized Childrens' Program		163,845.28		163,845.28
Total Other Purchased Services		\$188,008.62		\$188,008.62
Total 1441 Adjudicated / Court-Placed Programs		\$188,008.62		\$188,008.62

General Fund (10)

1442 Alternative Education Programs

100 Personnel Services – Salaries

	<u>Elementary</u>	<u>Secondary</u>	<u>Federal</u>	<u>Total</u>
100 Personnel Services – Salaries		62,353.50		62,353.50
Total Personnel Services – Salaries		\$62,353.50		\$62,353.50

200 Personnel Services – Employee Benefits

220 Social Security Contributions		4,768.50		4,768.50
230 PSERS Retirement Contributions		20,844.52		20,844.52
250 Unemployment Compensation		54.49		54.49
260 Workers' Compensation		691.52		691.52
Total Personnel Services – Employee Benefits		\$26,359.03		\$26,359.03

300 Purchased Professional and Technical Services

322 Professional Educational Services – Ius		11,334.50	36,173.40	47,507.90
330 Other Professional Services		2,399.32		2,399.32
Total Purchased Professional and Technical Services		\$13,733.82	\$36,173.40	\$49,907.22

500 Other Purchased Services

563 Tuition To Nonpublic Schools		48,208.91		48,208.91
568 Tuition To Private Residential Rehabilitative Institutions (PRRI) [In-State] and Detention Centers	80.00	3,924.86		4,004.86
Total Other Purchased Services	\$80.00	\$52,133.77		\$52,213.77

Total 1442 Alternative Education Programs

	\$80.00	\$154,580.12	\$36,173.40	\$190,833.52
--	----------------	---------------------	--------------------	---------------------

General Fund (10)

	<u>Elementary</u>	<u>Secondary</u>	<u>Federal</u>	<u>Total</u>
1600 Adult Education Programs				
500 <u>Other Purchased Services</u>				
566 Tuition To Institutions of Higher Education and Technical Institutes				370,181.00
Total Other Purchased Services				\$370,181.00
800 <u>Other Objects</u>				
890 Miscellaneous Expenditures				93,197.00
Total Other Objects				\$93,197.00
Total 1600 Adult Education Programs				\$463,378.00

General Fund (10)

1800 Pre-Kindergarten

Elementary

Secondary

Federal

Total

100 Personnel Services – Salaries

100 Personnel Services – Salaries 136,537.09

Total Personnel Services – Salaries \$136,537.09

200 Personnel Services – Employee Benefits

210 Group Insurance – Contracted Provider 22,389.20

220 Social Security Contributions 10,373.40

230 PSERS Retirement Contributions 44,835.05

250 Unemployment Compensation 136.64

260 Workers' Compensation 1,228.89

270 Group Insurance – Self-Insurance 7,539.69

Total Personnel Services – Employee Benefits \$86,502.87

300 Purchased Professional and Technical Services

330 Other Professional Services 1,425.00

Total Purchased Professional and Technical Services \$1,425.00

400 Purchased Property Services

430 Repairs and Maintenance Services 4,489.82

Total Purchased Property Services \$4,489.82

500 Other Purchased Services

549 Other Advertising/Public Relations 935.00

Total Other Purchased Services \$935.00

600 Supplies

610 General Supplies 41,754.06

630 Food 4,406.77

640 Books and Periodicals 1,805.66

Total Supplies \$47,966.49

700 Property

752 Capital Equipment – Original and Additional 9,149.09

Total Property \$9,149.09

800 Other Objects

890 Miscellaneous Expenditures 619.62

Total Other Objects \$619.62

Total 1800 Pre-Kindergarten \$287,624.98

General Fund (10)

1801 Pre-K Instruction

Elementary

Secondary

Federal

Total

100 Personnel Services – Salaries

100 Personnel Services – Salaries 136,537.09

Total Personnel Services – Salaries \$136,537.09

200 Personnel Services – Employee Benefits

210 Group Insurance – Contracted Provider 22,389.20

220 Social Security Contributions 10,373.40

230 PSERS Retirement Contributions 44,835.05

250 Unemployment Compensation 136.64

260 Workers' Compensation 1,228.89

270 Group Insurance – Self-Insurance 7,539.69

Total Personnel Services – Employee Benefits \$86,502.87

300 Purchased Professional and Technical Services

330 Other Professional Services 1,425.00

Total Purchased Professional and Technical Services \$1,425.00

400 Purchased Property Services

430 Repairs and Maintenance Services 4,489.82

Total Purchased Property Services \$4,489.82

500 Other Purchased Services

549 Other Advertising/Public Relations 935.00

Total Other Purchased Services \$935.00

600 Supplies

610 General Supplies 41,754.06

630 Food 4,406.77

640 Books and Periodicals 1,805.66

Total Supplies \$47,966.49

700 Property

752 Capital Equipment – Original and Additional 9,149.09

Total Property \$9,149.09

800 Other Objects

890 Miscellaneous Expenditures 619.62

Total Other Objects \$619.62

Total 1801 Pre-K Instruction \$287,624.98

LEA : 125235103 Interboro SD

Printed 11/14/2019 1:20:25 PM

Page - 1 of 60

General Fund (10)**2000 Support Services****Total****100 Personnel Services – Salaries**

100 Personnel Services – Salaries 9,837,738.54

Total Personnel Services – Salaries**\$9,837,738.54****200 Personnel Services – Employee Benefits**

210 Group Insurance – Contracted Provider 1,006,782.99

220 Social Security Contributions 741,460.89

230 PSERS Retirement Contributions 3,098,094.76

240 Tuition Reimbursement 123,299.71

250 Unemployment Compensation 8,327.53

260 Workers' Compensation 107,923.95

270 Group Insurance – Self-Insurance 363,959.49

291 Other Retirement Plans 80,545.31

299 All Other Employee Benefits 606,786.71

Total Personnel Services – Employee Benefits**\$6,137,181.34****300 Purchased Professional and Technical Services**

310 Official / Administrative Services 1,600.00

322 Professional Educational Services – Ius 44,166.16

329 Professional Educational Services – Other 12,111.48

330 Other Professional Services 541,201.48

350 Security / Safety Services 900.00

360 Employee Training and Development Services 120,201.65

Total Purchased Professional and Technical Services**\$720,180.77****400 Purchased Property Services**

410 Cleaning Services 59,349.17

420 Utility Services 96,500.49

430 Repairs and Maintenance Services 484,087.97

440 Rentals 421,453.36

460 Extermination Services 5,801.00

Total Purchased Property Services**\$1,067,191.99****500 Other Purchased Services**

513 Contracted Carriers 404,170.00

515 Public Carriers 3,168.00

516 Student Transportation Services From the IU 34,508.76

520 Insurance – General 55,613.00

521 Fire Insurance 78,067.00

522 Automotive Liability Insurance 33,163.00

523 General Property and Liability Insurance 51,674.00

530 Communications 29,067.23

549 Other Advertising/Public Relations 2,535.47

580 Travel 77,865.74

595 IU Payments By Withholding 37,614.15

Total Other Purchased Services**\$807,446.35****600 Supplies**

610 General Supplies 322,706.48

LEA : 125235103 Interboro SD

Printed 11/14/2019 1:20:25 PM

General Fund (10)

2000 Support Services

Total

600 Supplies	
620 Energy	612,708.89
630 Food	10,536.16
640 Books and Periodicals	14,336.03
650 Supplies & Fees – Technology Related	347,657.75
Total Supplies	\$1,307,945.31
700 Property	
752 Capital Equipment – Original and Additional	91,295.59
766 Capitalized Technology Equipment – Replacement	301,434.76
Total Property	\$392,730.35
800 Other Objects	
810 Dues and Fees	35,602.92
890 Miscellaneous Expenditures	3,169.22
Total Other Objects	\$38,772.14
Total 2000 Support Services	\$20,309,186.79

General Fund (10)

2100 Support Services – Students

100 Personnel Services – Salaries

	<u>Elementary</u>	<u>Secondary</u>	<u>Federal</u>	<u>Total</u>
100 Personnel Services – Salaries	755,274.28	849,398.13	12,427.90	1,919,310.63
Total Personnel Services – Salaries	\$755,274.28	\$849,398.13	\$12,427.90	\$1,919,310.63

200 Personnel Services – Employee Benefits

210 Group Insurance – Contracted Provider	94,404.99	80,559.04	6,610.52	258,792.48
220 Social Security Contributions	56,681.47	64,095.15	942.52	144,197.57
230 PSERS Retirement Contributions	243,547.90	270,657.01	4,154.56	613,979.04
250 Unemployment Compensation	638.55	727.72	12.46	1,626.63
260 Workers' Compensation	8,297.97	9,341.72	111.86	21,063.22
270 Group Insurance – Self-Insurance	32,920.52	27,780.47	2,462.98	88,961.92
291 Other Retirement Plans	4,076.35	3,576.34		7,652.69
Total Personnel Services – Employee Benefits	\$440,567.75	\$456,737.45	\$14,294.90	\$1,136,273.55

300 Purchased Professional and Technical Services

329 Professional Educational Services – Other			4,000.00	4,000.00
330 Other Professional Services	90,512.82	90,512.82		181,025.64
Total Purchased Professional and Technical Services	\$90,512.82	\$90,512.82	\$4,000.00	\$185,025.64

500 Other Purchased Services

530 Communications	1,267.85	1,267.84		2,535.69
580 Travel	1,356.98	1,356.97		2,713.95
Total Other Purchased Services	\$2,624.83	\$2,624.81		\$5,249.64

600 Supplies

610 General Supplies	10,354.33	10,012.29		20,366.62
630 Food	75.00	75.00		150.00
650 Supplies & Fees – Technology Related	1,020.63	1,020.62		2,041.25
Total Supplies	\$11,449.96	\$11,107.91		\$22,557.87

800 Other Objects

810 Dues and Fees	687.50	687.50		1,375.00
Total Other Objects	\$687.50	\$687.50		\$1,375.00

Total 2100 Support Services – Students

	\$1,301,117.14	\$1,411,068.62	\$30,722.80	\$3,269,792.33
--	-----------------------	-----------------------	--------------------	-----------------------

General Fund (10)

2110 Supervision of Student Services

	<u>Elementary</u>	<u>Secondary</u>	<u>Federal</u>	<u>Total</u>
100 Personnel Services – Salaries				
100 Personnel Services – Salaries	163,422.07	162,893.79	12,427.90	338,743.76
Total Personnel Services – Salaries	\$163,422.07	\$162,893.79	\$12,427.90	\$338,743.76
200 Personnel Services – Employee Benefits				
210 Group Insurance – Contracted Provider	9,921.56	9,507.58	6,610.52	26,039.66
220 Social Security Contributions	12,089.98	12,051.25	942.52	25,083.75
230 PSERS Retirement Contributions	50,722.13	50,533.35	4,154.56	105,410.04
250 Unemployment Compensation	138.44	136.57	12.46	287.47
260 Workers' Compensation	1,800.14	1,797.45	111.86	3,709.45
270 Group Insurance – Self-Insurance	3,683.59	3,526.95	2,462.98	9,673.52
291 Other Retirement Plans	3,326.35	3,326.34		6,652.69
Total Personnel Services – Employee Benefits	\$81,682.19	\$80,879.49	\$14,294.90	\$176,856.58
300 Purchased Professional and Technical Services				
330 Other Professional Services	90,512.82	90,512.82		181,025.64
Total Purchased Professional and Technical Services	\$90,512.82	\$90,512.82		\$181,025.64
500 Other Purchased Services				
530 Communications	1,267.85	1,267.84		2,535.69
580 Travel	1,356.98	1,356.97		2,713.95
Total Other Purchased Services	\$2,624.83	\$2,624.81		\$5,249.64
600 Supplies				
610 General Supplies	1,085.24	1,145.23		2,230.47
630 Food	75.00	75.00		150.00
650 Supplies & Fees – Technology Related	1,020.63	1,020.62		2,041.25
Total Supplies	\$2,180.87	\$2,240.85		\$4,421.72
800 Other Objects				
810 Dues and Fees	687.50	687.50		1,375.00
Total Other Objects	\$687.50	\$687.50		\$1,375.00
Total 2110 Supervision of Student Services	\$341,110.28	\$339,839.26	\$26,722.80	\$707,672.34

General Fund (10)

	<u>Elementary</u>	<u>Secondary</u>	<u>Federal</u>	<u>Total</u>
2111 Supervision of Student Services – Head of Component				
100 Personnel Services – Salaries				
100 Personnel Services – Salaries	163,422.07	162,893.79	12,427.90	338,743.76
Total Personnel Services – Salaries	\$163,422.07	\$162,893.79	\$12,427.90	\$338,743.76
200 Personnel Services – Employee Benefits				
210 Group Insurance – Contracted Provider	9,921.56	9,507.58	6,610.52	26,039.66
220 Social Security Contributions	12,089.98	12,051.25	942.52	25,083.75
230 PSERS Retirement Contributions	50,722.13	50,533.35	4,154.56	105,410.04
250 Unemployment Compensation	138.44	136.57	12.46	287.47
260 Workers' Compensation	1,800.14	1,797.45	111.86	3,709.45
270 Group Insurance – Self-Insurance	3,683.59	3,526.95	2,462.98	9,673.52
291 Other Retirement Plans	3,326.35	3,326.34		6,652.69
Total Personnel Services – Employee Benefits	\$81,682.19	\$80,879.49	\$14,294.90	\$176,856.58
300 Purchased Professional and Technical Services				
330 Other Professional Services	90,512.82	90,512.82		181,025.64
Total Purchased Professional and Technical Services	\$90,512.82	\$90,512.82		\$181,025.64
500 Other Purchased Services				
530 Communications	1,267.85	1,267.84		2,535.69
580 Travel	1,356.98	1,356.97		2,713.95
Total Other Purchased Services	\$2,624.83	\$2,624.81		\$5,249.64
600 Supplies				
610 General Supplies	1,085.24	1,145.23		2,230.47
630 Food	75.00	75.00		150.00
650 Supplies & Fees – Technology Related	1,020.63	1,020.62		2,041.25
Total Supplies	\$2,180.87	\$2,240.85		\$4,421.72
800 Other Objects				
810 Dues and Fees	687.50	687.50		1,375.00
Total Other Objects	\$687.50	\$687.50		\$1,375.00
Total 2111 Supervision of Student Services – Head of Component	\$341,110.28	\$339,839.26	\$26,722.80	\$707,672.34

General Fund (10)

2120 Guidance Services

100 Personnel Services – Salaries

	<u>Elementary</u>	<u>Secondary</u>	<u>Federal</u>	<u>Total</u>
100 Personnel Services – Salaries	288,894.55	512,356.97		801,251.52
Total Personnel Services – Salaries	\$288,894.55	\$512,356.97		\$801,251.52

200 Personnel Services – Employee Benefits

210 Group Insurance – Contracted Provider	28,501.76	43,614.61		72,116.37
220 Social Security Contributions	21,813.27	39,017.17		60,830.44
230 PSERS Retirement Contributions	93,456.19	162,409.70		255,865.89
250 Unemployment Compensation	244.17	445.28		689.45
260 Workers' Compensation	3,201.82	5,632.04		8,833.86
270 Group Insurance – Self-Insurance	10,935.47	15,035.34		25,970.81
291 Other Retirement Plans	750.00	250.00		1,000.00
Total Personnel Services – Employee Benefits	\$158,902.68	\$266,404.14		\$425,306.82

600 Supplies

610 General Supplies	530.32	829.36		1,359.68
Total Supplies	\$530.32	\$829.36		\$1,359.68

Total 2120 Guidance Services

	\$448,327.55	\$779,590.47		\$1,227,918.02
--	---------------------	---------------------	--	-----------------------

General Fund (10)

	<u>Elementary</u>	<u>Secondary</u>	<u>Federal</u>	<u>Total</u>
2140 Psychological Services				
100 Personnel Services – Salaries				
100 Personnel Services – Salaries	302,957.66	174,147.37		477,105.03
Total Personnel Services – Salaries	\$302,957.66	\$174,147.37		\$477,105.03
200 Personnel Services – Employee Benefits				
210 Group Insurance – Contracted Provider	55,981.67	27,436.85		83,418.52
220 Social Security Contributions	22,778.22	13,026.73		35,804.95
230 PSERS Retirement Contributions	99,369.58	57,713.96		157,083.54
250 Unemployment Compensation	255.94	145.87		401.81
260 Workers' Compensation	3,296.01	1,912.23		5,208.24
270 Group Insurance – Self-Insurance	18,301.46	9,218.18		27,519.64
Total Personnel Services – Employee Benefits	\$199,982.88	\$109,453.82		\$309,436.70
600 Supplies				
610 General Supplies	8,738.77	8,037.70		16,776.47
Total Supplies	\$8,738.77	\$8,037.70		\$16,776.47
Total 2140 Psychological Services	\$511,679.31	\$291,638.89		\$803,318.20

LEA : 125235103 Interboro SD

Printed 11/14/2019 1:20:25 PM

General Fund (10)

2160 Social Work Services

Elementary

Secondary

Federal

Total

100 Personnel Services – Salaries

100 Personnel Services – Salaries

212,520.05

Total Personnel Services – Salaries

\$212,520.05

200 Personnel Services – Employee Benefits

210 Group Insurance – Contracted Provider

44,100.42

220 Social Security Contributions

15,741.50

230 PSERS Retirement Contributions

68,334.53

250 Unemployment Compensation

174.23

260 Workers' Compensation

2,333.06

270 Group Insurance – Self-Insurance

15,029.90

Total Personnel Services – Employee Benefits

\$145,713.64

Total 2160 Social Work Services

\$358,233.69

General Fund (10)

2170 Student Accounting Services

Elementary

Secondary

Federal

Total

100 Personnel Services – Salaries

100 Personnel Services – Salaries

89,690.27

Total Personnel Services – Salaries

\$89,690.27

200 Personnel Services – Employee Benefits

210 Group Insurance – Contracted Provider

33,117.51

220 Social Security Contributions

6,736.93

230 PSERS Retirement Contributions

27,285.04

250 Unemployment Compensation

73.67

260 Workers' Compensation

978.61

270 Group Insurance – Self-Insurance

10,768.05

Total Personnel Services – Employee Benefits

\$78,959.81

Total 2170 Student Accounting Services

\$168,650.08

General Fund (10)

2190 Other Student Services

Elementary

Secondary

Federal

Total

300 Purchased Professional and Technical Services

329 Professional Educational Services – Other

4,000.00

4,000.00

Total Purchased Professional and Technical Services

\$4,000.00

\$4,000.00

Total 2190 Other Student Services

\$4,000.00

\$4,000.00

General Fund (10)

2200 Support Services – Instructional Staff

	<u>Elementary</u>	<u>Secondary</u>	<u>Federal</u>	<u>Total</u>
100 Personnel Services – Salaries				
100 Personnel Services – Salaries	316,801.03	230,856.71		547,657.74
Total Personnel Services – Salaries	\$316,801.03	\$230,856.71		\$547,657.74
200 Personnel Services – Employee Benefits				
210 Group Insurance – Contracted Provider	34,670.14	6,465.68		41,135.82
220 Social Security Contributions	23,832.68	17,535.32		41,368.00
230 PSERS Retirement Contributions	100,378.85	72,503.85		172,882.70
240 Tuition Reimbursement	71,279.01	52,020.70		123,299.71
250 Unemployment Compensation	258.34	190.08		448.42
260 Workers' Compensation	3,490.77	2,504.96		5,995.73
270 Group Insurance – Self-Insurance	14,215.70	2,790.63		17,006.33
291 Other Retirement Plans	750.00	250.00		1,000.00
Total Personnel Services – Employee Benefits	\$248,875.49	\$154,261.22		\$403,136.71
300 Purchased Professional and Technical Services				
329 Professional Educational Services – Other			8,111.48	8,111.48
360 Employee Training and Development Services	21,852.08	46,384.89	39,710.00	107,946.97
Total Purchased Professional and Technical Services	\$21,852.08	\$46,384.89	\$47,821.48	\$116,058.45
500 Other Purchased Services				
530 Communications	34.93	34.93		69.86
580 Travel	1,309.21	1,309.21		2,618.42
Total Other Purchased Services	\$1,344.14	\$1,344.14		\$2,688.28
600 Supplies				
610 General Supplies	12,023.88	22,060.58		34,084.46
640 Books and Periodicals	7,627.29	5,884.19		13,511.48
650 Supplies & Fees – Technology Related	4,240.00	2,136.40		6,376.40
Total Supplies	\$23,891.17	\$30,081.17		\$53,972.34
700 Property				
766 Capitalized Technology Equipment – Replacement	174,802.60	126,632.16		301,434.76
Total Property	\$174,802.60	\$126,632.16		\$301,434.76
Total 2200 Support Services – Instructional Staff	\$787,566.51	\$589,560.29	\$47,821.48	\$1,424,948.28

General Fund (10)

2220 Technology Support Services

	<u>Elementary</u>	<u>Secondary</u>	<u>Federal</u>	<u>Total</u>
600 Supplies				
610 General Supplies	10,247.86	20,041.62		30,289.48
Total Supplies	\$10,247.86	\$20,041.62		\$30,289.48
700 Property				
766 Capitalized Technology Equipment – Replacement	174,802.60	126,632.16		301,434.76
Total Property	\$174,802.60	\$126,632.16		\$301,434.76
Total 2220 Technology Support Services	\$185,050.46	\$146,673.78		\$331,724.24

General Fund (10)

	<u>Elementary</u>	<u>Secondary</u>	<u>Federal</u>	<u>Total</u>
2250 School Library Services				
100 Personnel Services – Salaries				
100 Personnel Services – Salaries	254,458.45	161,428.29		415,886.74
Total Personnel Services – Salaries	\$254,458.45	\$161,428.29		\$415,886.74
200 Personnel Services – Employee Benefits				
210 Group Insurance – Contracted Provider	34,670.14	6,465.68		41,135.82
220 Social Security Contributions	19,085.81	12,234.33		31,320.14
230 PSERS Retirement Contributions	79,128.55	49,194.04		128,322.59
250 Unemployment Compensation	211.81	133.68		345.49
260 Workers' Compensation	2,827.11	1,774.66		4,601.77
270 Group Insurance – Self-Insurance	14,215.70	2,790.63		17,006.33
291 Other Retirement Plans	750.00	250.00		1,000.00
Total Personnel Services – Employee Benefits	\$150,889.12	\$72,843.02		\$223,732.14
600 Supplies				
610 General Supplies	1,095.01	1,072.63		2,167.64
640 Books and Periodicals	7,603.30	5,860.21		13,463.51
650 Supplies & Fees – Technology Related	4,240.00	2,136.40		6,376.40
Total Supplies	\$12,938.31	\$9,069.24		\$22,007.55
Total 2250 School Library Services	\$418,285.88	\$243,340.55		\$661,626.43

General Fund (10)

2260 Instruction and Curriculum Development Services

	<u>Elementary</u>	<u>Secondary</u>	<u>Federal</u>	<u>Total</u>
100 Personnel Services – Salaries				
100 Personnel Services – Salaries	47,788.60	54,874.40		102,663.00
Total Personnel Services – Salaries	\$47,788.60	\$54,874.40		\$102,663.00
200 Personnel Services – Employee Benefits				
220 Social Security Contributions	3,636.46	4,190.58		7,827.04
230 PSERS Retirement Contributions	16,316.22	18,423.52		34,739.74
250 Unemployment Compensation	38.07	48.36		86.43
260 Workers' Compensation	522.40	589.18		1,111.58
Total Personnel Services – Employee Benefits	\$20,513.15	\$23,251.64		\$43,764.79
500 Other Purchased Services				
530 Communications	34.93	34.93		69.86
580 Travel	1,309.21	1,309.21		2,618.42
Total Other Purchased Services	\$1,344.14	\$1,344.14		\$2,688.28
600 Supplies				
610 General Supplies	681.01	681.01		1,362.02
640 Books and Periodicals	23.99	23.98		47.97
Total Supplies	\$705.00	\$704.99		\$1,409.99
Total 2260 Instruction and Curriculum Development Services	\$70,350.89	\$80,175.17		\$150,526.06

General Fund (10)

	<u>Elementary</u>	<u>Secondary</u>	<u>Federal</u>	<u>Total</u>
2270 Instructional Staff Professional Development Services				
100 Personnel Services – Salaries				
100 Personnel Services – Salaries	14,553.98	14,554.02		29,108.00
Total Personnel Services – Salaries	\$14,553.98	\$14,554.02		\$29,108.00
200 Personnel Services – Employee Benefits				
220 Social Security Contributions	1,110.41	1,110.41		2,220.82
230 PSERS Retirement Contributions	4,934.08	4,886.29		9,820.37
240 Tuition Reimbursement	71,279.01	52,020.70		123,299.71
250 Unemployment Compensation	8.46	8.04		16.50
260 Workers' Compensation	141.26	141.12		282.38
Total Personnel Services – Employee Benefits	\$77,473.22	\$58,166.56		\$135,639.78
300 Purchased Professional and Technical Services				
329 Professional Educational Services – Other			8,111.48	8,111.48
360 Employee Training and Development Services	21,852.08	46,384.89	39,710.00	107,946.97
Total Purchased Professional and Technical Services	\$21,852.08	\$46,384.89	\$47,821.48	\$116,058.45
600 Supplies				
610 General Supplies		265.32		265.32
Total Supplies		\$265.32		\$265.32
Total 2270 Instructional Staff Professional Development Services	\$113,879.28	\$119,370.79	\$47,821.48	\$281,071.55

General Fund (10)

	<u>Elementary</u>	<u>Secondary</u>	<u>Federal</u>	<u>Total</u>
2300 Support Services – Administration				
100 Personnel Services – Salaries				
100 Personnel Services – Salaries	993,582.02	1,054,759.25		2,661,562.79
Total Personnel Services – Salaries	\$993,582.02	\$1,054,759.25		\$2,661,562.79
200 Personnel Services – Employee Benefits				
210 Group Insurance – Contracted Provider	159,509.35	186,719.85		424,240.66
220 Social Security Contributions	74,854.94	79,309.36		197,782.58
230 PSERS Retirement Contributions	309,700.39	337,465.50		837,845.53
250 Unemployment Compensation	841.59	883.99		2,245.50
260 Workers' Compensation	10,909.50	11,614.57		29,311.68
270 Group Insurance – Self-Insurance	60,463.20	64,283.88		159,366.11
291 Other Retirement Plans	17,912.43	31,946.10		63,533.20
Total Personnel Services – Employee Benefits	\$634,191.40	\$712,223.25		\$1,714,325.26
300 Purchased Professional and Technical Services				
310 Official / Administrative Services				1,600.00
330 Other Professional Services				162,366.08
Total Purchased Professional and Technical Services				\$163,966.08
400 Purchased Property Services				
430 Repairs and Maintenance Services	991.40	397.58		1,388.98
Total Purchased Property Services	\$991.40	\$397.58		\$1,388.98
500 Other Purchased Services				
520 Insurance – General				42,055.00
530 Communications	252.87	252.87		1,419.66
549 Other Advertising/Public Relations				2,535.47
580 Travel				505.30
Total Other Purchased Services	\$252.87	\$252.87		\$46,515.43
600 Supplies				
610 General Supplies	11,681.31	5,582.29		27,630.79
630 Food	75.12	3,069.83		9,318.15
640 Books and Periodicals				824.55
Total Supplies	\$11,756.43	\$8,652.12		\$37,773.49
800 Other Objects				
810 Dues and Fees	4,800.69	4,625.86		29,128.71
890 Miscellaneous Expenditures				3,135.70
Total Other Objects	\$4,800.69	\$4,625.86		\$32,264.41
Total 2300 Support Services – Administration	\$1,645,574.81	\$1,780,910.93		\$4,657,796.44

General Fund (10)

2310 Board Services

Elementary

Secondary

Federal

Total

300 Purchased Professional and Technical Services

330 Other Professional Services

3,244.15

Total Purchased Professional and Technical Services

\$3,244.15

500 Other Purchased Services

520 Insurance – General

28,103.00

549 Other Advertising/Public Relations

2,535.47

580 Travel

110.00

Total Other Purchased Services

\$30,748.47

600 Supplies

610 General Supplies

1,512.18

Total Supplies

\$1,512.18

800 Other Objects

810 Dues and Fees

11,561.66

890 Miscellaneous Expenditures

3,000.00

Total Other Objects

\$14,561.66

Total 2310 Board Services

\$50,066.46

General Fund (10)

	<u>Elementary</u>	<u>Secondary</u>	<u>Federal</u>	<u>Total</u>
2330 Tax Assessment and Collection Services				
100 Personnel Services – Salaries				
100 Personnel Services – Salaries				45,644.82
Total Personnel Services – Salaries				\$45,644.82
200 Personnel Services – Employee Benefits				
210 Group Insurance – Contracted Provider				8,477.99
220 Social Security Contributions				3,470.83
230 PSERS Retirement Contributions				15,324.81
250 Unemployment Compensation				38.37
260 Workers' Compensation				501.29
270 Group Insurance – Self-Insurance				2,940.53
291 Other Retirement Plans				1,225.00
Total Personnel Services – Employee Benefits				\$31,978.82
300 Purchased Professional and Technical Services				
310 Official / Administrative Services				1,600.00
330 Other Professional Services				173.18
Total Purchased Professional and Technical Services				\$1,773.18
500 Other Purchased Services				
520 Insurance – General				13,952.00
530 Communications				913.92
Total Other Purchased Services				\$14,865.92
600 Supplies				
610 General Supplies				87.98
Total Supplies				\$87.98
Total 2330 Tax Assessment and Collection Services				\$94,350.72

General Fund (10)

2350 Legal and Accounting Services

Elementary

Secondary

Federal

Total

300 Purchased Professional and Technical Services

330 Other Professional Services

126,643.75

Total Purchased Professional and Technical Services

\$126,643.75

Total 2350 Legal and Accounting Services

\$126,643.75

General Fund (10)

	<u>Elementary</u>	<u>Secondary</u>	<u>Federal</u>	<u>Total</u>
2360 Office of the Superintendent / Executive Director Services				
100 Personnel Services – Salaries				
100 Personnel Services – Salaries				567,576.70
Total Personnel Services – Salaries				\$567,576.70
200 Personnel Services – Employee Benefits				
210 Group Insurance – Contracted Provider				69,533.47
220 Social Security Contributions				40,147.45
230 PSERS Retirement Contributions				175,354.83
250 Unemployment Compensation				481.55
260 Workers' Compensation				6,286.32
270 Group Insurance – Self-Insurance				31,678.50
291 Other Retirement Plans				12,449.67
Total Personnel Services – Employee Benefits				\$335,931.79
300 Purchased Professional and Technical Services				
330 Other Professional Services				32,305.00
Total Purchased Professional and Technical Services				\$32,305.00
500 Other Purchased Services				
530 Communications	252.87	252.87		505.74
580 Travel				395.30
Total Other Purchased Services	\$252.87	\$252.87		\$901.04
600 Supplies				
610 General Supplies				8,767.03
630 Food				6,173.20
640 Books and Periodicals				824.55
Total Supplies				\$15,764.78
800 Other Objects				
810 Dues and Fees				8,140.50
890 Miscellaneous Expenditures				135.70
Total Other Objects				\$8,276.20
Total 2360 Office of the Superintendent / Executive Director Services	\$252.87	\$252.87		\$960,755.51

General Fund (10)

2380 Office of the Principal Services

	<u>Elementary</u>	<u>Secondary</u>	<u>Federal</u>	<u>Total</u>
100 Personnel Services – Salaries				
100 Personnel Services – Salaries	993,582.02	1,054,759.25		2,048,341.27
Total Personnel Services – Salaries	\$993,582.02	\$1,054,759.25		\$2,048,341.27
200 Personnel Services – Employee Benefits				
210 Group Insurance – Contracted Provider	159,509.35	186,719.85		346,229.20
220 Social Security Contributions	74,854.94	79,309.36		154,164.30
230 PSERS Retirement Contributions	309,700.39	337,465.50		647,165.89
250 Unemployment Compensation	841.59	883.99		1,725.58
260 Workers' Compensation	10,909.50	11,614.57		22,524.07
270 Group Insurance – Self-Insurance	60,463.20	64,283.88		124,747.08
291 Other Retirement Plans	17,912.43	31,946.10		49,858.53
Total Personnel Services – Employee Benefits	\$634,191.40	\$712,223.25		\$1,346,414.65
400 Purchased Property Services				
430 Repairs and Maintenance Services	991.40	397.58		1,388.98
Total Purchased Property Services	\$991.40	\$397.58		\$1,388.98
600 Supplies				
610 General Supplies	11,681.31	5,582.29		17,263.60
630 Food	75.12	3,069.83		3,144.95
Total Supplies	\$11,756.43	\$8,652.12		\$20,408.55
800 Other Objects				
810 Dues and Fees	4,800.69	4,625.86		9,426.55
Total Other Objects	\$4,800.69	\$4,625.86		\$9,426.55
Total 2380 Office of the Principal Services	\$1,645,321.94	\$1,780,658.06		\$3,425,980.00

LEA : 125235103 Interboro SD

Printed 11/14/2019 1:20:25 PM

General Fund (10)

	<u>Elementary</u>	<u>Secondary</u>	<u>Federal</u>	<u>Total</u>
2400 Support Services – Pupil Health				
100 Personnel Services – Salaries				
100 Personnel Services – Salaries				516,479.99
Total Personnel Services – Salaries				\$516,479.99
200 Personnel Services – Employee Benefits				
210 Group Insurance – Contracted Provider				24,254.82
220 Social Security Contributions				39,549.74
230 PSERS Retirement Contributions				164,969.18
250 Unemployment Compensation				428.05
260 Workers' Compensation				5,687.64
270 Group Insurance – Self-Insurance				10,416.62
Total Personnel Services – Employee Benefits				\$245,306.05
300 Purchased Professional and Technical Services				
322 Professional Educational Services – lus			29,714.43	44,166.16
330 Other Professional Services				110,057.62
Total Purchased Professional and Technical Services			\$29,714.43	\$154,223.78
600 Supplies				
610 General Supplies				6,243.63
Total Supplies				\$6,243.63
Total 2400 Support Services – Pupil Health			\$29,714.43	\$922,253.45

General Fund (10)

2420 Medical Services

	<u>Elementary</u>	<u>Secondary</u>	<u>Federal</u>	<u>Total</u>
100 Personnel Services – Salaries				
100 Personnel Services – Salaries				89,417.04
Total Personnel Services – Salaries				\$89,417.04
200 Personnel Services – Employee Benefits				
210 Group Insurance – Contracted Provider				7,798.65
220 Social Security Contributions				6,871.96
230 PSERS Retirement Contributions				31,224.30
250 Unemployment Compensation				74.35
260 Workers' Compensation				980.67
270 Group Insurance – Self-Insurance				2,816.81
Total Personnel Services – Employee Benefits				\$49,766.74
300 Purchased Professional and Technical Services				
330 Other Professional Services				35,874.75
Total Purchased Professional and Technical Services				\$35,874.75
600 Supplies				
610 General Supplies				198.49
Total Supplies				\$198.49
Total 2420 Medical Services				\$175,257.02

General Fund (10)

2440 Nursing Services

Elementary Secondary Federal Total

100 Personnel Services – Salaries				
100 Personnel Services – Salaries				416,887.11
Total Personnel Services – Salaries				\$416,887.11
200 Personnel Services – Employee Benefits				
210 Group Insurance – Contracted Provider				16,398.68
220 Social Security Contributions				31,899.08
230 PSERS Retirement Contributions				130,328.52
250 Unemployment Compensation				345.45
260 Workers' Compensation				4,595.23
270 Group Insurance – Self-Insurance				7,599.81
Total Personnel Services – Employee Benefits				\$191,166.77
300 Purchased Professional and Technical Services				
330 Other Professional Services				74,182.87
Total Purchased Professional and Technical Services				\$74,182.87
600 Supplies				
610 General Supplies				6,045.14
Total Supplies				\$6,045.14
Total 2440 Nursing Services				\$688,281.89

General Fund (10)

2450 Nonpublic Health Services

Elementary

Secondary

Federal

Total

100 Personnel Services – Salaries

100 Personnel Services – Salaries

10,175.84

Total Personnel Services – Salaries

\$10,175.84

200 Personnel Services – Employee Benefits

210 Group Insurance – Contracted Provider

57.49

220 Social Security Contributions

778.70

230 PSERS Retirement Contributions

3,416.36

250 Unemployment Compensation

8.25

260 Workers' Compensation

111.74

Total Personnel Services – Employee Benefits

\$4,372.54

Total 2450 Nonpublic Health Services

\$14,548.38

LEA : 125235103 Interboro SD

Printed 11/14/2019 1:20:25 PM

General Fund (10)

2490 Other Health Services

Elementary

Secondary

Federal

Total

300 Purchased Professional and Technical Services

322 Professional Educational Services – lus

29,714.43

44,166.16

Total Purchased Professional and Technical Services

\$29,714.43

\$44,166.16

Total 2490 Other Health Services

\$29,714.43

\$44,166.16

General Fund (10)

2500 Support Services – Business

Elementary Secondary Federal Total

100	<u>Personnel Services – Salaries</u>			
	100 Personnel Services – Salaries			381,179.83
Total Personnel Services – Salaries				\$381,179.83
200	<u>Personnel Services – Employee Benefits</u>			
	210 Group Insurance – Contracted Provider			80,531.15
	220 Social Security Contributions			28,124.46
	230 PSERS Retirement Contributions			117,120.28
	250 Unemployment Compensation			331.26
	260 Workers' Compensation			4,221.83
	270 Group Insurance – Self-Insurance			29,737.03
	291 Other Retirement Plans			3,170.46
Total Personnel Services – Employee Benefits				\$263,236.47
300	<u>Purchased Professional and Technical Services</u>			
	330 Other Professional Services			30,240.00
Total Purchased Professional and Technical Services				\$30,240.00
400	<u>Purchased Property Services</u>			
	430 Repairs and Maintenance Services			1,464.00
	440 Rentals			4,688.45
Total Purchased Property Services				\$6,152.45
500	<u>Other Purchased Services</u>			
	530 Communications			3,493.47
	580 Travel			1,068.99
Total Other Purchased Services				\$4,562.46
600	<u>Supplies</u>			
	610 General Supplies			6,476.55
	630 Food			264.26
Total Supplies				\$6,740.81
800	<u>Other Objects</u>			
	810 Dues and Fees			2,833.76
	890 Miscellaneous Expenditures			33.52
Total Other Objects				\$2,867.28
Total 2500 Support Services – Business				\$694,979.30

General Fund (10)

2510 Fiscal Services

Elementary

Secondary

Federal

Total

100 Personnel Services – Salaries

100 Personnel Services – Salaries

381,179.83

Total Personnel Services – Salaries

\$381,179.83

200 Personnel Services – Employee Benefits

210 Group Insurance – Contracted Provider

80,531.15

220 Social Security Contributions

28,124.46

230 PSERS Retirement Contributions

117,120.28

250 Unemployment Compensation

331.26

260 Workers' Compensation

4,221.83

270 Group Insurance – Self-Insurance

29,737.03

291 Other Retirement Plans

3,170.46

Total Personnel Services – Employee Benefits

\$263,236.47

300 Purchased Professional and Technical Services

330 Other Professional Services

30,240.00

Total Purchased Professional and Technical Services

\$30,240.00

400 Purchased Property Services

430 Repairs and Maintenance Services

1,464.00

440 Rentals

4,688.45

Total Purchased Property Services

\$6,152.45

500 Other Purchased Services

530 Communications

3,493.47

580 Travel

1,068.99

Total Other Purchased Services

\$4,562.46

600 Supplies

610 General Supplies

6,476.55

630 Food

264.26

Total Supplies

\$6,740.81

800 Other Objects

810 Dues and Fees

2,833.76

890 Miscellaneous Expenditures

33.52

Total Other Objects

\$2,867.28

Total 2510 Fiscal Services

\$694,979.30

General Fund (10)

2511 Supervision of Fiscal Services - Head of Component

Elementary

Secondary

Federal

Total

100 Personnel Services – Salaries

100 Personnel Services – Salaries 158,264.80

Total Personnel Services – Salaries \$158,264.80

200 Personnel Services – Employee Benefits

210 Group Insurance – Contracted Provider 11,230.08

220 Social Security Contributions 11,371.62

230 PSERS Retirement Contributions 45,511.82

250 Unemployment Compensation 130.64

260 Workers' Compensation 1,737.13

270 Group Insurance – Self-Insurance 7,098.31

291 Other Retirement Plans 3,170.46

Total Personnel Services – Employee Benefits \$80,250.06

300 Purchased Professional and Technical Services

330 Other Professional Services 30,240.00

Total Purchased Professional and Technical Services \$30,240.00

400 Purchased Property Services

430 Repairs and Maintenance Services 1,464.00

440 Rentals 4,688.45

Total Purchased Property Services \$6,152.45

500 Other Purchased Services

530 Communications 3,493.47

580 Travel 1,068.99

Total Other Purchased Services \$4,562.46

600 Supplies

610 General Supplies 6,476.55

630 Food 264.26

Total Supplies \$6,740.81

800 Other Objects

810 Dues and Fees 2,833.76

890 Miscellaneous Expenditures 33.52

Total Other Objects \$2,867.28

Total 2511 Supervision of Fiscal Services - Head of Component \$289,077.86

General Fund (10)

2512 Budgeting Services

Elementary

Secondary

Federal

Total

100 Personnel Services – Salaries

100 Personnel Services – Salaries

29,440.06

Total Personnel Services – Salaries

\$29,440.06

200 Personnel Services – Employee Benefits

210 Group Insurance – Contracted Provider

2,978.90

220 Social Security Contributions

2,253.03

230 PSERS Retirement Contributions

9,884.13

250 Unemployment Compensation

24.53

260 Workers' Compensation

323.31

270 Group Insurance – Self-Insurance

1,083.64

Total Personnel Services – Employee Benefits

\$16,547.54

Total 2512 Budgeting Services

\$45,987.60

General Fund (10)

2513 Receiving and Disbursing Funds Services

Elementary

Secondary

Federal

Total

100 Personnel Services – Salaries

100 Personnel Services – Salaries

32,599.13

Total Personnel Services – Salaries

\$32,599.13

200 Personnel Services – Employee Benefits

210 Group Insurance – Contracted Provider

24,292.79

220 Social Security Contributions

2,322.57

230 PSERS Retirement Contributions

10,944.89

250 Unemployment Compensation

27.30

260 Workers' Compensation

358.00

270 Group Insurance – Self-Insurance

7,822.95

Total Personnel Services – Employee Benefits

\$45,768.50

Total 2513 Receiving and Disbursing Funds Services

\$78,367.63

General Fund (10)

2514 Payroll Services

100 Personnel Services – Salaries

100 Personnel Services – Salaries

Elementary

Secondary

Federal

Total

80,227.82

Total Personnel Services – Salaries

\$80,227.82

200 Personnel Services – Employee Benefits

210 Group Insurance – Contracted Provider

28,522.22

220 Social Security Contributions

6,012.78

230 PSERS Retirement Contributions

23,702.66

250 Unemployment Compensation

80.36

260 Workers' Compensation

865.30

270 Group Insurance – Self-Insurance

9,070.13

Total Personnel Services – Employee Benefits

\$68,253.45

Total 2514 Payroll Services

\$148,481.27

General Fund (10)

2515 Financial Accounting Services

Elementary

Secondary

Federal

Total

100 Personnel Services – Salaries

100 Personnel Services – Salaries

57,095.92

Total Personnel Services – Salaries

\$57,095.92

200 Personnel Services – Employee Benefits

210 Group Insurance – Contracted Provider

11,124.14

220 Social Security Contributions

4,362.12

230 PSERS Retirement Contributions

19,169.32

250 Unemployment Compensation

48.70

260 Workers' Compensation

679.53

270 Group Insurance – Self-Insurance

3,795.08

Total Personnel Services – Employee Benefits

\$39,178.89

Total 2515 Financial Accounting Services

\$96,274.81

General Fund (10)

2516 Internal Auditing Services

Elementary

Secondary

Federal

Total

100 Personnel Services – Salaries

100 Personnel Services – Salaries

23,552.10

Total Personnel Services – Salaries

\$23,552.10

200 Personnel Services – Employee Benefits

210 Group Insurance – Contracted Provider

2,383.02

220 Social Security Contributions

1,802.34

230 PSERS Retirement Contributions

7,907.46

250 Unemployment Compensation

19.73

260 Workers' Compensation

258.56

270 Group Insurance – Self-Insurance

866.92

Total Personnel Services – Employee Benefits

\$13,238.03

Total 2516 Internal Auditing Services

\$36,790.13

General Fund (10)

	<u>Elementary</u>	<u>Secondary</u>	<u>Federal</u>	<u>Total</u>
2600 Operation and Maintenance of Plant Services				
100 Personnel Services – Salaries				
100 Personnel Services – Salaries				1,731,016.37
Total Personnel Services – Salaries				\$1,731,016.37
200 Personnel Services – Employee Benefits				
210 Group Insurance – Contracted Provider				27,926.10
220 Social Security Contributions				132,618.06
230 PSERS Retirement Contributions				565,793.16
250 Unemployment Compensation				1,446.39
260 Workers' Compensation				19,036.14
270 Group Insurance – Self-Insurance				7,068.17
299 All Other Employee Benefits				606,786.71
Total Personnel Services – Employee Benefits				\$1,360,674.73
300 Purchased Professional and Technical Services				
330 Other Professional Services				175.00
350 Security / Safety Services				900.00
Total Purchased Professional and Technical Services				\$1,075.00
400 Purchased Property Services				
410 Cleaning Services				59,349.17
420 Utility Services				96,500.49
430 Repairs and Maintenance Services				412,052.78
440 Rentals				831.99
460 Extermination Services				5,801.00
Total Purchased Property Services				\$574,535.43
500 Other Purchased Services				
521 Fire Insurance				78,067.00
523 General Property and Liability Insurance				51,674.00
530 Communications				26.90
580 Travel				266.96
Total Other Purchased Services				\$130,034.86
600 Supplies				
610 General Supplies	105,004.36	105,004.32		210,008.68
620 Energy				581,384.24
630 Food				400.00
Total Supplies	\$105,004.36	\$105,004.32		\$791,792.92
700 Property				
752 Capital Equipment – Original and Additional				91,295.59
Total Property				\$91,295.59
800 Other Objects				
810 Dues and Fees				1,265.45
Total Other Objects				\$1,265.45
Total 2600 Operation and Maintenance of Plant Services	\$105,004.36	\$105,004.32		\$4,681,690.35

General Fund (10)

	<u>Elementary</u>	<u>Secondary</u>	<u>Federal</u>	<u>Total</u>
2610 Supervision of Operation and Maintenance of Plant Services				
100 Personnel Services – Salaries				
100 Personnel Services – Salaries				86,098.16
Total Personnel Services – Salaries				\$86,098.16
200 Personnel Services – Employee Benefits				
210 Group Insurance – Contracted Provider				19,025.36
220 Social Security Contributions				6,621.10
230 PSERS Retirement Contributions				27,470.75
250 Unemployment Compensation				68.92
260 Workers' Compensation				935.67
270 Group Insurance – Self-Insurance				7,068.17
Total Personnel Services – Employee Benefits				\$61,189.97
500 Other Purchased Services				
530 Communications				26.90
580 Travel				266.96
Total Other Purchased Services				\$293.86
600 Supplies				
610 General Supplies	135.57	135.56		271.13
Total Supplies	\$135.57	\$135.56		\$271.13
800 Other Objects				
810 Dues and Fees				1,265.45
Total Other Objects				\$1,265.45
Total 2610 Supervision of Operation and Maintenance of Plant Services	\$135.57	\$135.56		\$149,118.57

General Fund (10)

2611 Supervision of Operation and Maintenance of Plant Services – Head of Component

	<u>Elementary</u>	<u>Secondary</u>	<u>Federal</u>	<u>Total</u>
100 <u>Personnel Services – Salaries</u>				
100 Personnel Services – Salaries				86,098.16
Total Personnel Services – Salaries				\$86,098.16
200 <u>Personnel Services – Employee Benefits</u>				
210 Group Insurance – Contracted Provider				19,025.36
220 Social Security Contributions				6,621.10
230 PSERS Retirement Contributions				27,470.75
250 Unemployment Compensation				68.92
260 Workers' Compensation				935.67
270 Group Insurance – Self-Insurance				7,068.17
Total Personnel Services – Employee Benefits				\$61,189.97
500 <u>Other Purchased Services</u>				
530 Communications				26.90
580 Travel				266.96
Total Other Purchased Services				\$293.86
600 <u>Supplies</u>				
610 General Supplies	135.57	135.56		271.13
Total Supplies	\$135.57	\$135.56		\$271.13
800 <u>Other Objects</u>				
810 Dues and Fees				1,265.45
Total Other Objects				\$1,265.45
Total 2611 Supervision of Operation and Maintenance of Plant Services – Head of Component	\$135.57	\$135.56		\$149,118.57

General Fund (10)

2620 Operation of Buildings Services

100 Personnel Services – Salaries

	<u>Elementary</u>	<u>Secondary</u>	<u>Federal</u>	<u>Total</u>
100 Personnel Services – Salaries				1,481,847.69

Total Personnel Services – Salaries				\$1,481,847.69
--	--	--	--	-----------------------

200 Personnel Services – Employee Benefits

210 Group Insurance – Contracted Provider				8,096.24
220 Social Security Contributions				113,448.35
230 PSERS Retirement Contributions				483,573.41
250 Unemployment Compensation				1,240.88
260 Workers' Compensation				16,325.17
299 All Other Employee Benefits				572,394.71

Total Personnel Services – Employee Benefits				\$1,195,078.76
---	--	--	--	-----------------------

300 Purchased Professional and Technical Services

330 Other Professional Services				175.00
---------------------------------	--	--	--	--------

Total Purchased Professional and Technical Services				\$175.00
--	--	--	--	-----------------

400 Purchased Property Services

410 Cleaning Services				59,349.17
420 Utility Services				96,500.49
430 Repairs and Maintenance Services				367,052.97
460 Extermination Services				5,801.00

Total Purchased Property Services				\$528,703.63
--	--	--	--	---------------------

500 Other Purchased Services

521 Fire Insurance				78,067.00
523 General Property and Liability Insurance				51,674.00

Total Other Purchased Services				\$129,741.00
---------------------------------------	--	--	--	---------------------

600 Supplies

610 General Supplies	94,393.99	94,393.98		188,787.97
620 Energy				571,076.67
630 Food				400.00

Total Supplies	\$94,393.99	\$94,393.98		\$760,264.64
-----------------------	--------------------	--------------------	--	---------------------

700 Property

752 Capital Equipment – Original and Additional				57,451.04
---	--	--	--	-----------

Total Property				\$57,451.04
-----------------------	--	--	--	--------------------

Total 2620 Operation of Buildings Services	\$94,393.99	\$94,393.98		\$4,153,261.76
---	--------------------	--------------------	--	-----------------------

General Fund (10)

	<u>Elementary</u>	<u>Secondary</u>	<u>Federal</u>	<u>Total</u>
2630 Care and Upkeep of Grounds Services				
100 Personnel Services – Salaries				
100 Personnel Services – Salaries				163,070.52
Total Personnel Services – Salaries				\$163,070.52
200 Personnel Services – Employee Benefits				
210 Group Insurance – Contracted Provider				804.50
220 Social Security Contributions				12,548.61
230 PSERS Retirement Contributions				54,749.00
250 Unemployment Compensation				136.59
260 Workers' Compensation				1,775.30
299 All Other Employee Benefits				34,392.00
Total Personnel Services – Employee Benefits				\$104,406.00
400 Purchased Property Services				
430 Repairs and Maintenance Services				22,788.83
440 Rentals				738.00
Total Purchased Property Services				\$23,526.83
600 Supplies				
610 General Supplies	9,253.29	9,253.28		18,506.57
Total Supplies	\$9,253.29	\$9,253.28		\$18,506.57
Total 2630 Care and Upkeep of Grounds Services	\$9,253.29	\$9,253.28		\$309,509.92

General Fund (10)

	<u>Elementary</u>	<u>Secondary</u>	<u>Federal</u>	<u>Total</u>
2640 Care and Upkeep of Equipment Services				
400 <u>Purchased Property Services</u>				
430 Repairs and Maintenance Services				17,912.31
440 Rentals				93.99
Total Purchased Property Services				\$18,006.30
600 <u>Supplies</u>				
610 General Supplies	975.63	975.62		1,951.25
Total Supplies	\$975.63	\$975.62		\$1,951.25
Total 2640 Care and Upkeep of Equipment Services	\$975.63	\$975.62		\$19,957.55

General Fund (10)

	<u>Elementary</u>	<u>Secondary</u>	<u>Federal</u>	<u>Total</u>
2650 Vehicle Operation and Maintenance Services (Other Than Student Transportation Vehicles)				
400 Purchased Property Services				
430 Repairs and Maintenance Services				4,298.67
Total Purchased Property Services				\$4,298.67
600 Supplies				
610 General Supplies	245.88	245.88		491.76
620 Energy				10,307.57
Total Supplies	\$245.88	\$245.88		\$10,799.33
700 Property				
752 Capital Equipment – Original and Additional				33,844.55
Total Property				\$33,844.55
Total 2650 Vehicle Operation and Maintenance Services (Other Than Student Transportation Vehicles)	\$245.88	\$245.88		\$48,942.55

LEA : 125235103 Interboro SD

Printed 11/14/2019 1:20:25 PM

General Fund (10)

2660 Safety and Security Services

Elementary

Secondary

Federal

Total

300 Purchased Professional and Technical Services

350 Security / Safety Services

900.00

Total Purchased Professional and Technical Services

\$900.00

Total 2660 Safety and Security Services

\$900.00

General Fund (10)

2700 Student Transportation Services

Elementary Secondary Federal Total

100 Personnel Services – Salaries

100 Personnel Services – Salaries 1,438,961.01

Total Personnel Services – Salaries \$1,438,961.01

200 Personnel Services – Employee Benefits

210 Group Insurance – Contracted Provider 33,483.76

220 Social Security Contributions 109,935.12

230 PSERS Retirement Contributions 418,464.36

250 Unemployment Compensation 1,258.68

260 Workers' Compensation 15,486.49

270 Group Insurance – Self-Insurance 11,666.43

Total Personnel Services – Employee Benefits \$590,294.84

300 Purchased Professional and Technical Services

330 Other Professional Services 9,977.80

Total Purchased Professional and Technical Services \$9,977.80

400 Purchased Property Services

430 Repairs and Maintenance Services 41,577.18

440 Rentals 338,000.00

Total Purchased Property Services \$379,577.18

500 Other Purchased Services

513 Contracted Carriers 404,170.00

515 Public Carriers 3,168.00

516 Student Transportation Services From the IU 34,508.76

522 Automotive Liability Insurance 33,163.00

530 Communications 117.27

580 Travel 67,684.03

Total Other Purchased Services \$542,811.06

600 Supplies

610 General Supplies 1,055.11

620 Energy 31,324.65

630 Food 403.75

Total Supplies \$32,783.51

800 Other Objects

810 Dues and Fees 660.00

Total Other Objects \$660.00

Total 2700 Student Transportation Services \$2,995,065.40

General Fund (10)

	<u>Elementary</u>	<u>Secondary</u>	<u>Federal</u>	<u>Total</u>
2710 Supervision of Student Transportation Services				
100 <u>Personnel Services – Salaries</u>				
100 Personnel Services – Salaries				101,355.71
Total Personnel Services – Salaries				\$101,355.71
200 <u>Personnel Services – Employee Benefits</u>				
210 Group Insurance – Contracted Provider				23,434.62
220 Social Security Contributions				7,651.95
230 PSERS Retirement Contributions				31,253.60
250 Unemployment Compensation				81.88
260 Workers' Compensation				1,124.88
270 Group Insurance – Self-Insurance				8,166.61
Total Personnel Services – Employee Benefits				\$71,713.54
300 <u>Purchased Professional and Technical Services</u>				
330 Other Professional Services				3,453.66
Total Purchased Professional and Technical Services				\$3,453.66
500 <u>Other Purchased Services</u>				
530 Communications				82.09
580 Travel				758.45
Total Other Purchased Services				\$840.54
600 <u>Supplies</u>				
610 General Supplies				753.64
630 Food				403.75
Total Supplies				\$1,157.39
800 <u>Other Objects</u>				
810 Dues and Fees				660.00
Total Other Objects				\$660.00
Total 2710 Supervision of Student Transportation Services				\$179,180.84

General Fund (10)

2711 Supervision of Student Transportation Services – Head of Component

	<u>Elementary</u>	<u>Secondary</u>	<u>Federal</u>	<u>Total</u>
100 Personnel Services – Salaries				
100 Personnel Services – Salaries				30,044.56
Total Personnel Services – Salaries				\$30,044.56
200 Personnel Services – Employee Benefits				
210 Group Insurance – Contracted Provider				6,867.77
220 Social Security Contributions				2,302.51
230 PSERS Retirement Contributions				9,141.29
250 Unemployment Compensation				22.02
260 Workers' Compensation				324.69
270 Group Insurance – Self-Insurance				2,606.83
Total Personnel Services – Employee Benefits				\$21,265.11
300 Purchased Professional and Technical Services				
330 Other Professional Services				3,453.66
Total Purchased Professional and Technical Services				\$3,453.66
500 Other Purchased Services				
530 Communications				82.09
580 Travel				758.45
Total Other Purchased Services				\$840.54
600 Supplies				
610 General Supplies				753.64
630 Food				403.75
Total Supplies				\$1,157.39
800 Other Objects				
810 Dues and Fees				660.00
Total Other Objects				\$660.00
Total 2711 Supervision of Student Transportation Services – Head of Component				\$57,421.26

General Fund (10)

2719 Supervision of Student Transportation Services – All Other Supervision

Elementary

Secondary

Federal

Total

100 Personnel Services – Salaries

100 Personnel Services – Salaries

71,311.15

Total Personnel Services – Salaries

\$71,311.15

200 Personnel Services – Employee Benefits

210 Group Insurance – Contracted Provider

16,566.85

220 Social Security Contributions

5,349.44

230 PSERS Retirement Contributions

22,112.31

250 Unemployment Compensation

59.86

260 Workers' Compensation

800.19

270 Group Insurance – Self-Insurance

5,559.78

Total Personnel Services – Employee Benefits

\$50,448.43

Total 2719 Supervision of Student Transportation Services – All Other Supervision

\$121,759.58

LEA : 125235103 Interboro SD

Printed 11/14/2019 1:20:25 PM

General Fund (10)

2720 Vehicle Operation Services

Elementary

Secondary

Federal

Total

100 Personnel Services – Salaries

100 Personnel Services – Salaries

603,818.54

Total Personnel Services – Salaries

\$603,818.54

200 Personnel Services – Employee Benefits

210 Group Insurance – Contracted Provider

5.86

220 Social Security Contributions

46,192.22

230 PSERS Retirement Contributions

184,119.20

250 Unemployment Compensation

541.85

260 Workers' Compensation

6,437.00

Total Personnel Services – Employee Benefits

\$237,296.13

300 Purchased Professional and Technical Services

330 Other Professional Services

5,044.00

Total Purchased Professional and Technical Services

\$5,044.00

400 Purchased Property Services

430 Repairs and Maintenance Services

0.03

440 Rentals

236,600.00

Total Purchased Property Services

\$236,600.03

500 Other Purchased Services

513 Contracted Carriers

404,170.00

516 Student Transportation Services From the IU

34,508.76

522 Automotive Liability Insurance

23,214.00

580 Travel

66,673.13

Total Other Purchased Services

\$528,565.89

Total 2720 Vehicle Operation Services

\$1,611,324.59

General Fund (10)

2730 Monitoring Services

Elementary

Secondary

Federal

Total

100 Personnel Services – Salaries

100 Personnel Services – Salaries

459,382.18

Total Personnel Services – Salaries

\$459,382.18

200 Personnel Services – Employee Benefits

220 Social Security Contributions

35,142.56

230 PSERS Retirement Contributions

115,474.42

250 Unemployment Compensation

394.56

260 Workers' Compensation

4,952.43

Total Personnel Services – Employee Benefits

\$155,963.97

Total 2730 Monitoring Services

\$615,346.15

General Fund (10)

2740 Vehicle Servicing and Maintenance Services

Elementary

Secondary

Federal

Total

400 Purchased Property Services

430 Repairs and Maintenance Services

30,844.92

Total Purchased Property Services

\$30,844.92

Total 2740 Vehicle Servicing and Maintenance Services

\$30,844.92

General Fund (10)

2750 Nonpublic Transportation

Elementary

Secondary

Federal

Total

100 Personnel Services – Salaries

100 Personnel Services – Salaries

274,404.58

Total Personnel Services – Salaries

\$274,404.58

200 Personnel Services – Employee Benefits

210 Group Insurance – Contracted Provider

10,043.28

220 Social Security Contributions

20,948.39

230 PSERS Retirement Contributions

87,617.14

250 Unemployment Compensation

240.39

260 Workers' Compensation

2,972.18

270 Group Insurance – Self-Insurance

3,499.82

Total Personnel Services – Employee Benefits

\$125,321.20

300 Purchased Professional and Technical Services

330 Other Professional Services

1,480.14

Total Purchased Professional and Technical Services

\$1,480.14

400 Purchased Property Services

430 Repairs and Maintenance Services

10,732.23

440 Rentals

101,400.00

Total Purchased Property Services

\$112,132.23

500 Other Purchased Services

515 Public Carriers

3,168.00

522 Automotive Liability Insurance

9,949.00

530 Communications

35.18

580 Travel

252.45

Total Other Purchased Services

\$13,404.63

600 Supplies

610 General Supplies

301.47

620 Energy

31,324.65

Total Supplies

\$31,626.12

Total 2750 Nonpublic Transportation

\$558,368.90

General Fund (10)

2800 Support Services – Central

Elementary Secondary Federal Total

100 Personnel Services – Salaries

100 Personnel Services – Salaries 641,570.18

Total Personnel Services – Salaries \$641,570.18

200 Personnel Services – Employee Benefits

210 Group Insurance – Contracted Provider 116,418.20

220 Social Security Contributions 47,885.36

230 PSERS Retirement Contributions 207,040.51

250 Unemployment Compensation 542.60

260 Workers' Compensation 7,121.22

270 Group Insurance – Self-Insurance 39,736.88

291 Other Retirement Plans 5,188.96

Total Personnel Services – Employee Benefits \$423,933.73

300 Purchased Professional and Technical Services

330 Other Professional Services 47,359.34

360 Employee Training and Development Services 12,254.68

Total Purchased Professional and Technical Services \$59,614.02

400 Purchased Property Services

430 Repairs and Maintenance Services 27,605.03

440 Rentals 77,932.92

Total Purchased Property Services \$105,537.95

500 Other Purchased Services

520 Insurance – General 13,558.00

530 Communications 21,404.38

580 Travel 3,008.09

Total Other Purchased Services \$37,970.47

600 Supplies

610 General Supplies 16,840.64

650 Supplies & Fees – Technology Related 339,240.10

Total Supplies \$356,080.74

800 Other Objects

810 Dues and Fees 340.00

Total Other Objects \$340.00

Total 2800 Support Services – Central \$1,625,047.09

General Fund (10)

2830 Staff Services

Elementary

Secondary

Federal

Total

100 Personnel Services – Salaries

100 Personnel Services – Salaries

235,591.96

Total Personnel Services – Salaries

\$235,591.96

200 Personnel Services – Employee Benefits

210 Group Insurance – Contracted Provider

33,140.31

220 Social Security Contributions

17,175.83

230 PSERS Retirement Contributions

74,132.89

250 Unemployment Compensation

197.40

260 Workers' Compensation

2,584.94

270 Group Insurance – Self-Insurance

10,810.66

291 Other Retirement Plans

5,188.96

Total Personnel Services – Employee Benefits

\$143,230.99

300 Purchased Professional and Technical Services

330 Other Professional Services

8,209.00

360 Employee Training and Development Services

12,254.68

Total Purchased Professional and Technical Services

\$20,463.68

500 Other Purchased Services

530 Communications

414.20

Total Other Purchased Services

\$414.20

600 Supplies

610 General Supplies

626.11

Total Supplies

\$626.11

800 Other Objects

810 Dues and Fees

225.00

Total Other Objects

\$225.00

Total 2830 Staff Services

\$400,551.94

General Fund (10)

2831 Supervision of Staff Services

Elementary

Secondary

Federal

Total

100 Personnel Services – Salaries

100 Personnel Services – Salaries

172,548.96

Total Personnel Services – Salaries

\$172,548.96

200 Personnel Services – Employee Benefits

210 Group Insurance – Contracted Provider

25,382.60

220 Social Security Contributions

12,196.37

230 PSERS Retirement Contributions

52,966.87

250 Unemployment Compensation

144.61

260 Workers' Compensation

1,892.48

270 Group Insurance – Self-Insurance

7,822.95

291 Other Retirement Plans

3,491.65

Total Personnel Services – Employee Benefits

\$103,897.53

500 Other Purchased Services

530 Communications

414.20

Total Other Purchased Services

\$414.20

600 Supplies

610 General Supplies

626.11

Total Supplies

\$626.11

Total 2831 Supervision of Staff Services

\$277,486.80

General Fund (10)

	<u>Elementary</u>	<u>Secondary</u>	<u>Federal</u>	<u>Total</u>
2832 Recruitment and Placement Services				
300 <u>Purchased Professional and Technical Services</u>				
330 Other Professional Services				8,209.00
Total Purchased Professional and Technical Services				\$8,209.00
800 <u>Other Objects</u>				
810 Dues and Fees				225.00
Total Other Objects				\$225.00
Total 2832 Recruitment and Placement Services				\$8,434.00

General Fund (10)

2833 Staff Accounting Services

Elementary

Secondary

Federal

Total

100 Personnel Services – Salaries

100 Personnel Services – Salaries

63,043.00

Total Personnel Services – Salaries

\$63,043.00

200 Personnel Services – Employee Benefits

210 Group Insurance – Contracted Provider

7,757.71

220 Social Security Contributions

4,979.46

230 PSERS Retirement Contributions

21,166.02

250 Unemployment Compensation

52.79

260 Workers' Compensation

692.46

270 Group Insurance – Self-Insurance

2,987.71

291 Other Retirement Plans

1,697.31

Total Personnel Services – Employee Benefits

\$39,333.46

Total 2833 Staff Accounting Services

\$102,376.46

General Fund (10)

2834 Staff Development Services – Non-Instructional, Certified Staff Only

Elementary

Secondary

Federal

Total

300 Purchased Professional and Technical Services

360 Employee Training and Development Services

5,599.00

Total Purchased Professional and Technical Services

\$5,599.00

Total 2834 Staff Development Services – Non-Instructional, Certified Staff Only

\$5,599.00

LEA : 125235103 Interboro SD

Printed 11/14/2019 1:20:25 PM

General Fund (10)

2836 Staff Development Services – Non-Instructional, Non-Certified Staff Only

Elementary

Secondary

Federal

Total

300 Purchased Professional and Technical Services

360 Employee Training and Development Services

6,655.68

Total Purchased Professional and Technical Services

\$6,655.68

Total 2836 Staff Development Services – Non-Instructional, Non-Certified Staff Only

\$6,655.68

General Fund (10)

2840 Data Processing Services

Elementary Secondary Federal Total

100 Personnel Services – Salaries

100 Personnel Services – Salaries 405,978.22

Total Personnel Services – Salaries \$405,978.22

200 Personnel Services – Employee Benefits

210 Group Insurance – Contracted Provider 83,277.89

220 Social Security Contributions 30,709.53

230 PSERS Retirement Contributions 132,907.62

250 Unemployment Compensation 345.20

260 Workers' Compensation 4,536.28

270 Group Insurance – Self-Insurance 28,926.22

Total Personnel Services – Employee Benefits \$280,702.74

300 Purchased Professional and Technical Services

330 Other Professional Services 39,150.34

Total Purchased Professional and Technical Services \$39,150.34

400 Purchased Property Services

430 Repairs and Maintenance Services 27,605.03

440 Rentals 77,932.92

Total Purchased Property Services \$105,537.95

500 Other Purchased Services

520 Insurance – General 13,558.00

530 Communications 20,990.18

580 Travel 3,008.09

Total Other Purchased Services \$37,556.27

600 Supplies

610 General Supplies 16,214.53

650 Supplies & Fees – Technology Related 339,240.10

Total Supplies \$355,454.63

800 Other Objects

810 Dues and Fees 115.00

Total Other Objects \$115.00

Total 2840 Data Processing Services \$1,224,495.15

LEA : 125235103 Interboro SD

Printed 11/14/2019 1:20:25 PM

General Fund (10)

2900 Other Support Services

Elementary

Secondary

Federal

Total

500 Other Purchased Services

595 IU Payments By Withholding

37,614.15

Total Other Purchased Services

\$37,614.15

Total 2900 Other Support Services

\$37,614.15

LEA : 125235103 Interboro SD

Printed 11/14/2019 1:20:25 PM

General Fund (10)

2910 Support Services Not Listed Elsewhere In the 2000 Series

Elementary

Secondary

Federal

Total

500 Other Purchased Services

595 IU Payments By Withholding

37,614.15

Total Other Purchased Services

\$37,614.15

Total 2910 Support Services Not Listed Elsewhere In the 2000 Series

\$37,614.15

General Fund (10)

3000 Operation of Non-Instructional Services

Total

100 Personnel Services – Salaries

100 Personnel Services – Salaries 513,217.26

Total Personnel Services – Salaries \$513,217.26

200 Personnel Services – Employee Benefits

210 Group Insurance – Contracted Provider 339.99

220 Social Security Contributions 39,052.19

230 PSERS Retirement Contributions 120,528.72

250 Unemployment Compensation 441.60

260 Workers' Compensation 5,489.61

Total Personnel Services – Employee Benefits \$165,852.11

300 Purchased Professional and Technical Services

329 Professional Educational Services – Other 10,000.00

330 Other Professional Services 38.00

350 Security / Safety Services 102,578.20

390 Other Purchased Professional and Technical Services 94,560.85

Total Purchased Professional and Technical Services \$207,177.05

400 Purchased Property Services

430 Repairs and Maintenance Services 1,871.07

440 Rentals 5,295.00

Total Purchased Property Services \$7,166.07

500 Other Purchased Services

520 Insurance – General 13,902.67

549 Other Advertising/Public Relations 36.60

580 Travel 71.25

Total Other Purchased Services \$14,010.52

600 Supplies

610 General Supplies 48,663.17

630 Food 455.20

650 Supplies & Fees – Technology Related 2,949.00

Total Supplies \$52,067.37

800 Other Objects

810 Dues and Fees 12,403.00

890 Miscellaneous Expenditures 1,982.38

Total Other Objects \$14,385.38

Total 3000 Operation of Non-Instructional Services \$973,875.76

General Fund (10)

3200 Student Activities

Elementary

Secondary

Federal

Total

100 Personnel Services – Salaries

100 Personnel Services – Salaries

513,217.26

Total Personnel Services – Salaries

\$513,217.26

200 Personnel Services – Employee Benefits

210 Group Insurance – Contracted Provider

339.99

220 Social Security Contributions

39,052.19

230 PSERS Retirement Contributions

120,528.72

250 Unemployment Compensation

441.60

260 Workers' Compensation

5,489.61

Total Personnel Services – Employee Benefits

\$165,852.11

300 Purchased Professional and Technical Services

329 Professional Educational Services – Other

10,000.00

350 Security / Safety Services

7,050.00

390 Other Purchased Professional and Technical Services

94,560.85

Total Purchased Professional and Technical Services

\$111,610.85

400 Purchased Property Services

430 Repairs and Maintenance Services

1,871.07

440 Rentals

5,295.00

Total Purchased Property Services

\$7,166.07

500 Other Purchased Services

520 Insurance – General

12,672.50

549 Other Advertising/Public Relations

36.60

580 Travel

71.25

Total Other Purchased Services

\$12,780.35

600 Supplies

610 General Supplies

45,213.50

630 Food

161.25

650 Supplies & Fees – Technology Related

2,949.00

Total Supplies

\$48,323.75

800 Other Objects

810 Dues and Fees

12,403.00

890 Miscellaneous Expenditures

1,682.98

Total Other Objects

\$14,085.98

Total 3200 Student Activities

\$873,036.37

LEA : 125235103 Interboro SD

Printed 11/14/2019 1:20:31 PM

Page - 3 of 3

General Fund (10)**3300 Community Services**ElementarySecondaryFederalTotal**300 Purchased Professional and Technical Services**

330 Other Professional Services

38.00

38.00

350 Security / Safety Services

95,528.20

Total Purchased Professional and Technical Services**\$38.00****\$95,566.20****500 Other Purchased Services**

520 Insurance – General

1,230.17

Total Other Purchased Services**\$1,230.17****600 Supplies**

610 General Supplies

2,074.66

3,449.67

630 Food

184.27

293.95

Total Supplies**\$2,258.93****\$3,743.62****800 Other Objects**

890 Miscellaneous Expenditures

299.40

299.40

Total Other Objects**\$299.40****\$299.40****Total 3300 Community Services****\$2,596.33****\$100,839.39**

General Fund (10)

4000 Facilities Acquisition, Construction and Improvement Services

Total

300 Purchased Professional and Technical Services

330 Other Professional Services

4,601.00

Total Purchased Professional and Technical Services

\$4,601.00

400 Purchased Property Services

450 Construction Services

50,894.58

Total Purchased Property Services

\$50,894.58

Total 4000 Facilities Acquisition, Construction and Improvement Services

\$55,495.58

LEA : 125235103 Interboro SD

Printed 11/14/2019 1:20:36 PM

General Fund (10)

4300 Architecture and Engineering Services / Educational Specifications Development – Original and Additional

Elementary

Secondary

Federal

Total

300 Purchased Professional and Technical Services

330 Other Professional Services

4,601.00

Total Purchased Professional and Technical Services

\$4,601.00

Total 4300 Architecture and Engineering Services / Educational Specifications Development – Original and Additional

\$4,601.00

LEA : 125235103 Interboro SD

Printed 11/14/2019 1:20:36 PM

General Fund (10)

	<u>Elementary</u>	<u>Secondary</u>	<u>Federal</u>	<u>Total</u>
4600 Existing Building Improvement Services				
400 <u>Purchased Property Services</u>				
450 Construction Services				50,894.58
Total Purchased Property Services				\$50,894.58
Total 4600 Existing Building Improvement Services				\$50,894.58

General Fund (10)

5000 Other Expenditures and Financing Uses

Total

800 Other Objects

830 Interest 1,738,239.53

880 Refunds of Prior Years' Receipts 221.73

Total Other Objects \$1,738,461.26

900 Other Uses of Funds

910 Redemption of Principal 2,822,831.99

Total Other Uses of Funds \$2,822,831.99

Total 5000 Other Expenditures and Financing Uses \$4,561,293.25

General Fund (10)

5100 Debt Service / Other Expenditures and Financing Uses	<u>Elementary</u>	<u>Secondary</u>	<u>Federal</u>	<u>Total</u>
800 Other Objects				
830 Interest				1,738,239.53
880 Refunds of Prior Years' Receipts				221.73
Total Other Objects				\$1,738,461.26
900 Other Uses of Funds				
910 Redemption of Principal				2,822,831.99
Total Other Uses of Funds				\$2,822,831.99
Total 5100 Debt Service / Other Expenditures and Financing Uses				\$4,561,293.25

LEA : 125235103 Interboro SD

Printed 11/14/2019 1:20:42 PM

General Fund (10)

	<u>Elementary</u>	<u>Secondary</u>	<u>Federal</u>	<u>Total</u>
5110 Debt Service				
800 Other Objects				
830 Interest				1,738,239.53
Total Other Objects				\$1,738,239.53
900 Other Uses of Funds				
910 Redemption of Principal				2,822,831.99
Total Other Uses of Funds				\$2,822,831.99
Total 5110 Debt Service				\$4,561,071.52

LEA : 125235103 Interboro SD

Printed 11/14/2019 1:20:42 PM

General Fund (10)

	<u>Elementary</u>	<u>Secondary</u>	<u>Federal</u>	<u>Total</u>
5130 Refund of Prior Year Revenues / Receipts				
800 <u>Other Objects</u>				
880 Refunds of Prior Years' Receipts				221.73
Total Other Objects				\$221.73
Total 5130 Refund of Prior Year Revenues / Receipts				\$221.73

Other Capital Projects Fund (39)

4000 Facilities Acquisition, Construction and Improvement Services

Total

400 Purchased Property Services

450 Construction Services

70,604.00

Total Purchased Property Services

\$70,604.00

Total 4000 Facilities Acquisition, Construction and Improvement Services

\$70,604.00

LEA : 125235103 Interboro SD

Printed 11/14/2019 1:20:39 PM

Other Capital Projects Fund (39)

4100 Site Acquisition Services – Original and Additional

Elementary

Secondary

Federal

Total

400 Purchased Property Services

450 Construction Services

70,604.00

Total Purchased Property Services

\$70,604.00

Total 4100 Site Acquisition Services – Original and Additional

\$70,604.00

	<u>General Fund(10)</u>	<u>Public Purpose Trust(27)</u>	<u>Other Compt Approved (28)</u>	<u>Athletic / Activity(29)</u>	<u>Capital Reserve (690, 1850)(31)</u>
1000 Instruction					
1100 Regular Programs - Elementary / Secondary	28,520,158.02				
1200 Special Programs - Elementary / Secondary	10,465,825.97				
1300 Vocational Education	996,191.00				
1400 Other Instructional Programs - Elementary / Secondary	525,420.29				
1600 Adult Education Programs	463,378.00				
1800 Pre-Kindergarten	287,624.98				
Total Instruction	\$41,258,598.26				
2000 Support Services					
2100 Support Services - Students	3,269,792.33				
2200 Support Services - Instructional Staff	1,424,948.28				
2300 Support Services - Administration	4,657,796.44				
2400 Support Services - Pupil Health	922,253.45				
2500 Support Services - Business	694,979.30				
2600 Operation and Maintenance of Plant Services	4,681,690.35				
2700 Student Transportation Services	2,995,065.40				
2800 Support Services - Central	1,625,047.09				
2900 Other Support Services	37,614.15				
Total Support Services	\$20,309,186.79				
3000 Operation of Non-Instructional Services					
3200 Student Activities	873,036.37				
3300 Community Services	100,839.39				
Total Operation of Non-Instructional Services	\$973,875.76				
4000 Facilities Acquisition, Construction and Improvement Services					
4100 Site Acquisition Services - Original and Additional					
4300 Architecture and Engineering Services / Educational Specifications Development - Original and Additional	4,601.00				
4600 Existing Building Improvement Services	50,894.58				
Total Facilities Acquisition, Construction and Improvement	\$55,495.58				
5000 Other Expenditures and Financing Uses					
5100 Debt Service / Other Expenditures and Financing Uses	4,561,293.25				
Total Other Expenditures and Financing Uses	\$4,561,293.25				
TOTAL ACTUAL EXPENDITURES & OTHER FINANCING USES	\$67,158,449.64				

	<u>Capital Reserve (1431)(32)</u>	<u>Other Capital Projects Fund(39)</u>	<u>Debt Service(40)</u>	<u>Permanent(90)</u>	<u>Total</u>
1000 Instruction					
1100 Regular Programs - Elementary / Secondary					28,520,158.02
1200 Special Programs - Elementary / Secondary					10,465,825.97
1300 Vocational Education					996,191.00
1400 Other Instructional Programs - Elementary / Secondary					525,420.29
1600 Adult Education Programs					463,378.00
1800 Pre-Kindergarten					287,624.98
Total Instruction					\$41,258,598.26
2000 Support Services					
2100 Support Services - Students					3,269,792.33
2200 Support Services - Instructional Staff					1,424,948.28
2300 Support Services - Administration					4,657,796.44
2400 Support Services - Pupil Health					922,253.45
2500 Support Services - Business					694,979.30
2600 Operation and Maintenance of Plant Services					4,681,690.35
2700 Student Transportation Services					2,995,065.40
2800 Support Services - Central					1,625,047.09
2900 Other Support Services					37,614.15
Total Support Services					\$20,309,186.79
3000 Operation of Non-Instructional Services					
3200 Student Activities					873,036.37
3300 Community Services					100,839.39
Total Operation of Non-Instructional Services					\$973,875.76
4000 Facilities Acquisition, Construction and Improvement Services					
4100 Site Acquisition Services - Original and Additional		70,604.00			70,604.00
4300 Architecture and Engineering Services / Educational Specifications Development - Original and Additional					4,601.00
4600 Existing Building Improvement Services					50,894.58
Total Facilities Acquisition, Construction and Improvement		\$70,604.00			\$126,099.58
5000 Other Expenditures and Financing Uses					
5100 Debt Service / Other Expenditures and Financing Uses					4,561,293.25
Total Other Expenditures and Financing Uses					\$4,561,293.25
TOTAL ACTUAL EXPENDITURES & OTHER FINANCING USES		\$70,604.00			\$67,229,053.64

LEA : 125235103 Interboro SD

Printed 11/14/2019 1:21:03 PM

PSERS Salary Data (Salary Data should relate to the General Fund only)

Amount Description	Amount
Total Salary Base for salaries subject to PSERS withholding	31,015,419.80
Total Federally Funded salaries subject to PSERS withholding	344,290.27
	<hr/>

Title I Expenditure Data

Amount Description	Amount
Expenditures Funded with Current Title I Funds	324,933.72
Expenditures Funded with Carry over Title I Funds	19,356.55
Total Title I Expenditure Data	<hr/> \$344,290.27 <hr/>

Benefits for Staff Relative to Collective Bargaining Agreements

	OBJECT	COVERED	NOT COVERED	TOTAL
10 General Fund				
	211 Medical Insurance	3,691,232.45	283,244.68	3,974,477.13
	212 Dental Insurance			
	215 Eye Care Insurance	37,298.90	2,131.70	39,430.60
	216 Prescription Insurance			
	271 Self-Insurance Medical Benefits			
	272 Self-Insurance Dental Benefits	369,322.84	20,939.46	390,262.30
	275 Self-Insurance Eye Care Benefits			
	276 Self-Insurance Prescription Benefits	969,902.30	80,830.00	1,050,732.30
	FUND TOTAL	\$5,067,756.49	\$387,145.84	\$5,454,902.33
50 Enterprise Fund	No Self Insurance data to report			
	211 Medical Insurance			
	212 Dental Insurance			
	215 Eye Care Insurance			
	216 Prescription Insurance			
	271 Self-Insurance Medical Benefits			
	272 Self-Insurance Dental Benefits			
	275 Self-Insurance Eye Care Benefits			
	276 Self-Insurance Prescription Benefits			
	FUND TOTAL			
60 Internal Service Fund	No Self Insurance data to report			
	211 Medical Insurance			
	212 Dental Insurance			
	215 Eye Care Insurance			
	216 Prescription Insurance			
	271 Self-Insurance Medical Benefits			
	272 Self-Insurance Dental Benefits			
	275 Self-Insurance Eye Care Benefits			
	276 Self-Insurance Prescription Benefits			
	FUND TOTAL			
Total of All Funds		\$5,067,756.49	\$387,145.84	\$5,454,902.33

LEA : 125235103 Interboro SD

Printed 11/14/2019 1:21:08 PM

Function	Special Education (Prior Year)	Nonspecial Education (Prior Year)	Total (Prior Year)	Special Education (Current Year)	Nonspecial Education (Current Year)	Total (Current Year)
2120 Guidance Services	365,871.78	825,850.11	1,191,721.89	374,228.64	853,689.38	1,227,918.02
2140 Psychological Services	692,493.60	76,943.73	769,437.33	722,986.38	80,331.82	803,318.20
2150 Speech Pathology and Audiology Services						
2160 Social Work Services	62,156.68	283,158.21	345,314.89	64,482.06	293,751.63	358,233.69
2260 Instruction and Curriculum Development Services	25,824.15	117,643.34	143,467.49	27,094.69	123,431.37	150,526.06
2350 Legal and Accounting Services	56,519.89	58,018.06	114,537.95	97,230.50	29,413.25	126,643.75
2420 Medical Services	34,750.60	104,251.79	139,002.39	43,814.26	131,442.76	175,257.02
2440 Nursing Services	152,516.80	457,550.41	610,067.21	172,070.47	516,211.42	688,281.89
2700 Student Transportation Services	803,376.01	2,063,507.14	2,866,883.15	826,045.26	2,169,020.14	2,995,065.40
Total	\$2,193,509.51	\$3,986,922.79	\$6,180,432.30	\$2,327,952.26	\$4,197,291.77	\$6,525,244.03

(PRINCIPAL AMOUNTS ONLY)

GOVERNMENTAL FUNDS/ ACTIVITIES

	Short-Term Borrowing	General Obligation Bonds/Notes	Authority Building Obligations	Other Long-Term Debt	Other Post-Employment Benefits (OPEB)	Compensated Absences	Net Pension Liability	Total
1. Debt at Beginning of Fiscal Year		55,100,000.00		460,616.00		1,711,947.00	117,251,000.00	174,523,563.00
2. Additional Debt Incurred During Year					4,754,000.00	158,842.00		4,912,842.00
3. Retirements and Repayments		2,450,000.00		372,832.00		125,919.00	7,800,000.00	10,748,751.00
4. Debt at End of Fiscal Year		52,650,000.00		87,784.00	4,754,000.00	1,744,870.00	109,451,000.00	168,687,654.00
5. Accreted Interest at End Of Fiscal Year								
6. Total Debt and Accreted Interest		52,650,000.00		87,784.00	4,754,000.00	1,744,870.00	109,451,000.00	168,687,654.00
7. Current Portion P&I - Due within 1 year		4,182,588.00		39,000.00		248,434.00		4,470,022.00
8. Interest Paid during current fiscal year		1,734,212.52		4,027.01				1,738,239.53

(PRINCIPAL AMOUNTS ONLY)

PROPRIETARY FUNDS

- 1. Debt at Beginning of Fiscal Year
- 2. Additional Debt Incurred During Year
- 3. Retirements and Repayments
- 4. Debt at End of Fiscal Year
- 5. Accreted Interest at End Of Fiscal Year
- 6. Total Debt and Accreted Interest
- 7. Current Portion P&I - Due within 1 year
- 8. Interest Paid during current fiscal year

Total Principal and Interest Payments Made by Your School - All Funds

Function	Fund		Principal (910)	Principal (920)	Interest (830)	Total (Principal +Interest)	Misc Other Uses (990)
5110	10	General Fund	2,822,831.99		1,738,239.53	4,561,071.52	
5110	20	Special Revenue Funds					
5110	30	Capital Projects Funds					
5110	40	Debt Service Fund					
5110	90	Permanent Fund					
5120	10	General Fund					
5120	20	Special Revenue Funds					
5120	30	Capital Projects Funds					
5120	40	Debt Service Fund					

Total Debt Payments - Governmental Funds			\$2,822,831.99		\$1,738,239.53	\$4,561,071.52	
---	--	--	-----------------------	--	-----------------------	-----------------------	--

Function	Fund		Principal (910)	Principal (920)	Interest (830)	Total (Principal +Interest)
5110	50	Enterprise Fund				
5110	60	Internal Service Fund				
5120	50	Enterprise Fund				
5120	60	Internal Service Fund				

Total Debt Payments - Proprietary Funds						
--	--	--	--	--	--	--

LEA : 125235103 Interboro SD

Printed 11/14/2019 1:21:11 PM

Debt Details
Governmental Funds/ Activities

Debt Category	Debt Issue Date (MM/YYYY)	Principal Amounts Only			Debt at End of Fiscal Year	Current Portion Due Within One Year (Principal and Interest)	Interest Paid During Fiscal Year
		Debt at Beginning of Fiscal Year	Additions	Reductions / Repayments			
General Obligation Bonds/Notes – CIB	03/2017	7,110,000.00		250,000.00	6,860,000.00	496,365.00	248,865.00
General Obligation Bonds/Notes – CIB	05/2016	6,040,000.00		65,000.00	5,975,000.00	251,875.00	188,175.00
General Obligation Bonds/Notes – CIB	05/2015	7,040,000.00		45,000.00	6,995,000.00	275,785.00	236,685.00
General Obligation Bonds/Notes – CIB	06/2015	5,990,000.00		100,000.00	5,890,000.00	239,263.00	141,762.50
General Obligation Bonds/Notes – CIB	06/2015	1,490,000.00		280,000.00	1,210,000.00	315,700.00	34,250.00
General Obligation Bonds/Notes – CIB	01/2014	7,290,000.00		1,365,000.00	5,925,000.00	1,573,581.00	202,456.26
General Obligation Bonds/Notes – CIB	02/2014	11,800,000.00		5,000.00	11,795,000.00	489,256.00	484,356.26
General Obligation Bonds/Notes – CIB	06/2013	8,340,000.00		340,000.00	8,000,000.00	540,763.00	197,662.50
Other Long Term Debt/Liabilities		460,616.00		372,832.00	87,784.00	39,000.00	4,027.01
Compensated Absences		1,711,947.00	158,842.00	125,919.00	1,744,870.00	248,434.00	
Other Post-Employment Benefits (OPEB)			4,754,000.00		4,754,000.00		
Net Pension Liability		117,251,000.00		7,800,000.00	109,451,000.00		
Totals for Debt Entered:		\$174,523,563.00	\$4,912,842.00	\$10,748,751.00	\$168,687,654.00	\$4,470,022.00	\$1,738,239.53

General Fund (10)

Section 1: Tuition/Purchased Services as Reported within Expenditure Detail

	Amount
Tuition Reported in General Fund Expenditures 1000-560	3,385,937.36
Purchased Services in General Fund Expenditures 1000-594 and 1000-597	163,845.28
Section 1 Total	\$3,549,782.64

Section 2: Tuition Paid to Institution Types During Fiscal Year

	Tuition Paid For Nonspecial Education	Tuition Paid For Special Education	Total
1 1306 Institutions			
2 Institutionalized Children's Programs		705,628.94	705,628.94
3 Juveniles Incarcerated in Adult Facilities			
4 Residential Treatment Facilities			
5 Other Local Education Agencies	20,964.03	52,362.85	73,326.88
6 Brick and Mortar Charter Schools	79,350.73	1,112.24	80,462.97
7 Cyber Charter Schools	263,378.49	219,380.26	482,758.75
8 Career and Technology Centers	1,343,833.00	22,539.00	1,366,372.00
9 Approved Private Schools		609,698.11	609,698.11
10 PA Chartered Schools for the Deaf and Blind			
11 Private Residential Rehabilitative Institutions	80.00	66,833.71	66,913.71
12 Juvenile Detention Centers		163,845.28	163,845.28
13 Special Program Jointures			
14 Other Tuition Not Included Elsewhere In This Section	676.00	100.00	776.00
Section 2 Total	\$1,708,282.25	\$1,841,500.39	\$3,549,782.64

1 .	<u>Student Transportation Services for Educational Field Trips</u>	19,269.90
2 .	<u>Student Transportation Services for Student Activities</u>	33,646.66
3 .	<u>Rental of Vehicles for Student Transportation Services</u>	
4 .	<u>Capital Reserve Funds</u>	

Include only district-owned transportation expenditures paid from State or local money.
 DO NOT include federal expenditures or payments to contract service providers.
 Contracted transportation services should not be recorded on this schedule.

Food Service / Cafeteria Operations Fund (51)

3000 Operation of Non-Instructional Services

Total

100 Personnel Services – Salaries

100 Personnel Services – Salaries 8,166.00

Total Personnel Services – Salaries \$8,166.00

200 Personnel Services – Employee Benefits

220 Social Security Contributions 625.00

230 PSERS Retirement Contributions 1,619.00

250 Unemployment Compensation 8.00

260 Workers' Compensation 73.00

Total Personnel Services – Employee Benefits \$2,325.00

400 Purchased Property Services

430 Repairs and Maintenance Services 50,495.00

Total Purchased Property Services \$50,495.00

500 Other Purchased Services

570 Food Service Management 1,101,760.00

Total Other Purchased Services \$1,101,760.00

600 Supplies

610 General Supplies 865.00

630 Food 102,182.00

650 Supplies & Fees – Technology Related 4,802.00

Total Supplies \$107,849.00

700 Property

740 Depreciation 51,461.00

Total Property \$51,461.00

800 Other Objects

810 Dues and Fees 1,091.00

Total Other Objects \$1,091.00

Total 3000 Operation of Non-Instructional Services \$1,323,147.00

LEA : 125235103 Interboro SD

Printed 11/14/2019 1:21:19 PM

Page - 2 of 2

Food Service / Cafeteria Operations Fund (51)

	<u>Elementary</u>	<u>Secondary</u>	<u>Federal</u>	<u>Total</u>
3100 Food Services				
100 Personnel Services – Salaries				
100 Personnel Services – Salaries				8,166.00
Total Personnel Services – Salaries				\$8,166.00
200 Personnel Services – Employee Benefits				
220 Social Security Contributions				625.00
230 PSERS Retirement Contributions				1,619.00
250 Unemployment Compensation				8.00
260 Workers' Compensation				73.00
Total Personnel Services – Employee Benefits				\$2,325.00
400 Purchased Property Services				
430 Repairs and Maintenance Services				50,495.00
Total Purchased Property Services				\$50,495.00
500 Other Purchased Services				
570 Food Service Management				1,101,760.00
Total Other Purchased Services				\$1,101,760.00
600 Supplies				
610 General Supplies				865.00
630 Food				102,182.00
650 Supplies & Fees – Technology Related				4,802.00
Total Supplies				\$107,849.00
700 Property				
740 Depreciation				51,461.00
Total Property				\$51,461.00
800 Other Objects				
810 Dues and Fees				1,091.00
Total Other Objects				\$1,091.00
Total 3100 Food Services				\$1,323,147.00

	<u>Food Service(51)</u>	<u>Child Care Operations(52)</u>	<u>Other Enterprise(58)</u>	<u>Internal Service(60)</u>	<u>Total</u>
3000 <u>Operation of Non-Instructional Services</u>					
3100 Food Services	1,323,147.00				1,323,147.00
Total Operation of Non-Instructional Services	\$1,323,147.00				\$1,323,147.00
TOTAL ACTUAL EXPENDITURES & OTHER FINANCING USES	\$1,323,147.00				\$1,323,147.00

LEA : 125235103 Interboro SD

Printed 11/14/2019 1:21:30 PM

Fund	School	School Number	Local Personnel	Local Nonpersonnel	State Personnel	State Nonpersonnel	Federal Personnel	Federal Nonpersonnel	Total	Explanation
10										
	Glenolden Sch	1881	6,369,925.57	596,586.11	3,316,548.56	310,616.94	96,854.96	9,071.11	10,699,603.25	
	Interboro SHS	1885	10,514,623.81	984,764.81	5,474,516.16	512,725.04	159,875.25	14,973.39	17,661,478.46	
	Kindergarten Academy	7643	2,537,778.35	237,679.91	1,321,312.95	123,749.79	38,587.02	3,613.93	4,262,721.95	
	Norwood Sch	1883	5,547,780.51	519,586.73	2,888,492.69	270,526.65	84,354.21	7,900.34	9,318,641.13	
	Prospect Park Sch	6508	5,551,177.81	519,904.91	2,890,261.52	270,692.31	84,405.87	7,905.17	9,324,347.59	
	Tinicum Sch	4847	3,451,650.34	323,270.13	1,797,127.11	168,312.97	52,482.47	4,915.33	5,797,758.35	
Total			33,972,936.39	3,181,792.60	17,688,258.99	1,656,623.70	516,559.78	48,379.27	57,064,550.73	